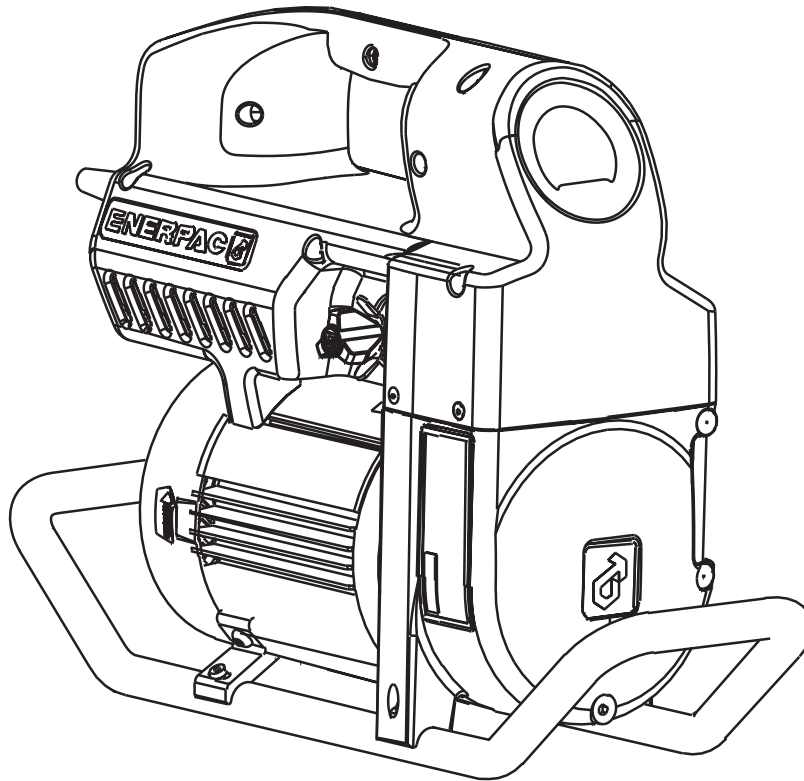


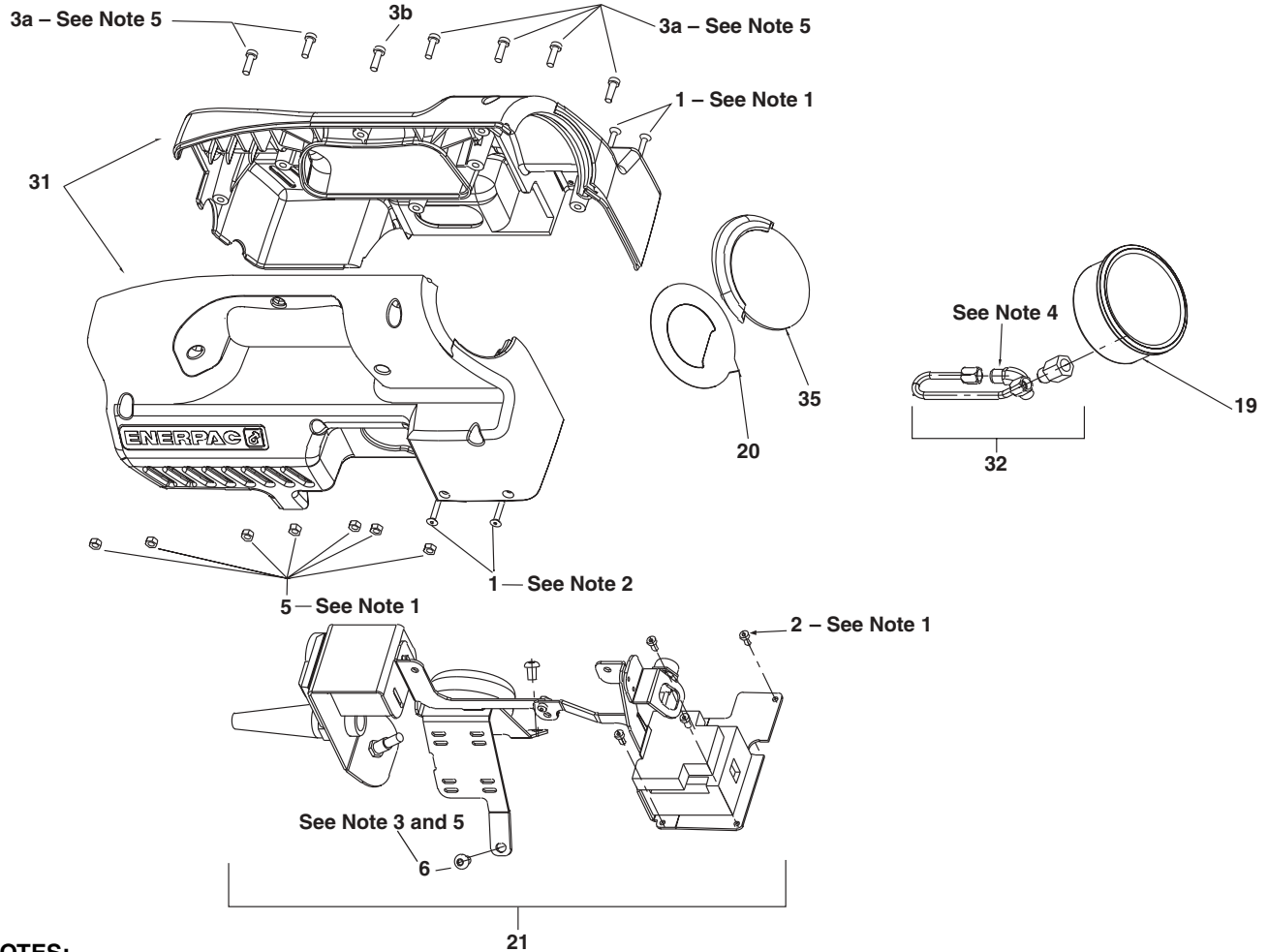
To Protect Your Warranty, Use Only ENERPAC Hydraulic Oil.

Enerpac recommends that all kit components be installed to insure optimum performance of the repaired product.



Contents

Figure 1 - Basic Pump Assembly	2	Figure 5 - Electrical Assembly (Pendant)	9
Figure 2 - Pumping Assembly	4	Figure 6 - 380 VAC Wire Assembly	10
Figure 3 - Valve Assembly	6	Figure 7 - Hydraulic Schematic	10
Figure 4 - Electrical Assembly	8	Figure 8 - PTE Pump Test Block	11



NOTES:

1. Torque finger tight – do not overtighten
2. Torque finger tight – do not overtighten
3. Torque to 15-20 ft. lbs. [20-27 Nm].
4. Apply Loctite sealant 545 to pipe threads. Screw nipple into port to a finger-tight position. Note this position by placing a mark on valve housing. Wrench tighten the fitting between 2-3 complete turns. Repeat for quick disconnect installation.
5. Apply Loctite sealant 242 to threads.

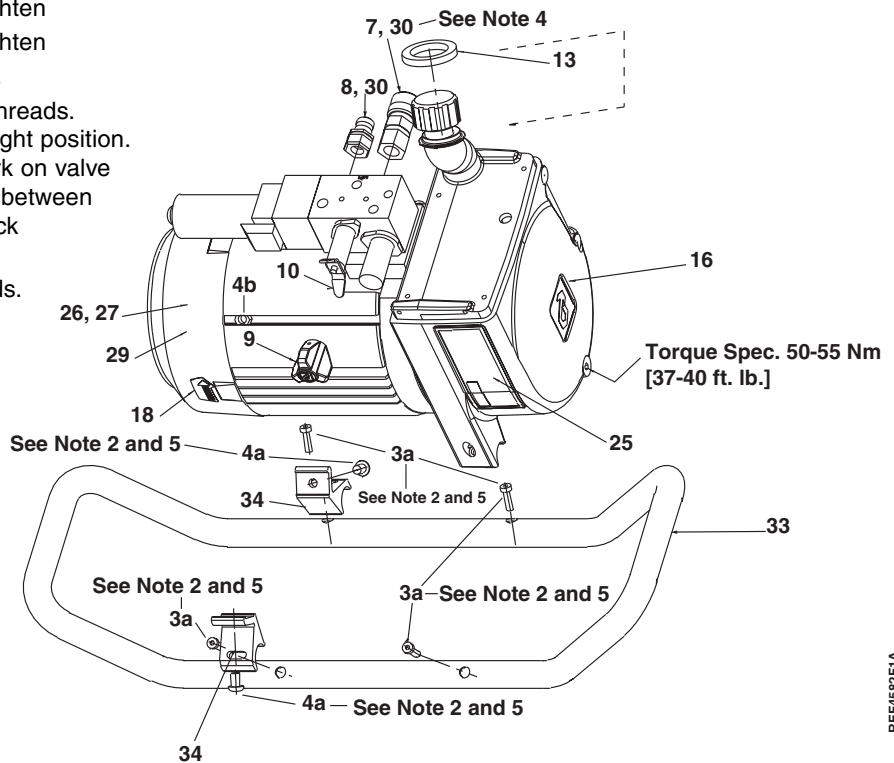
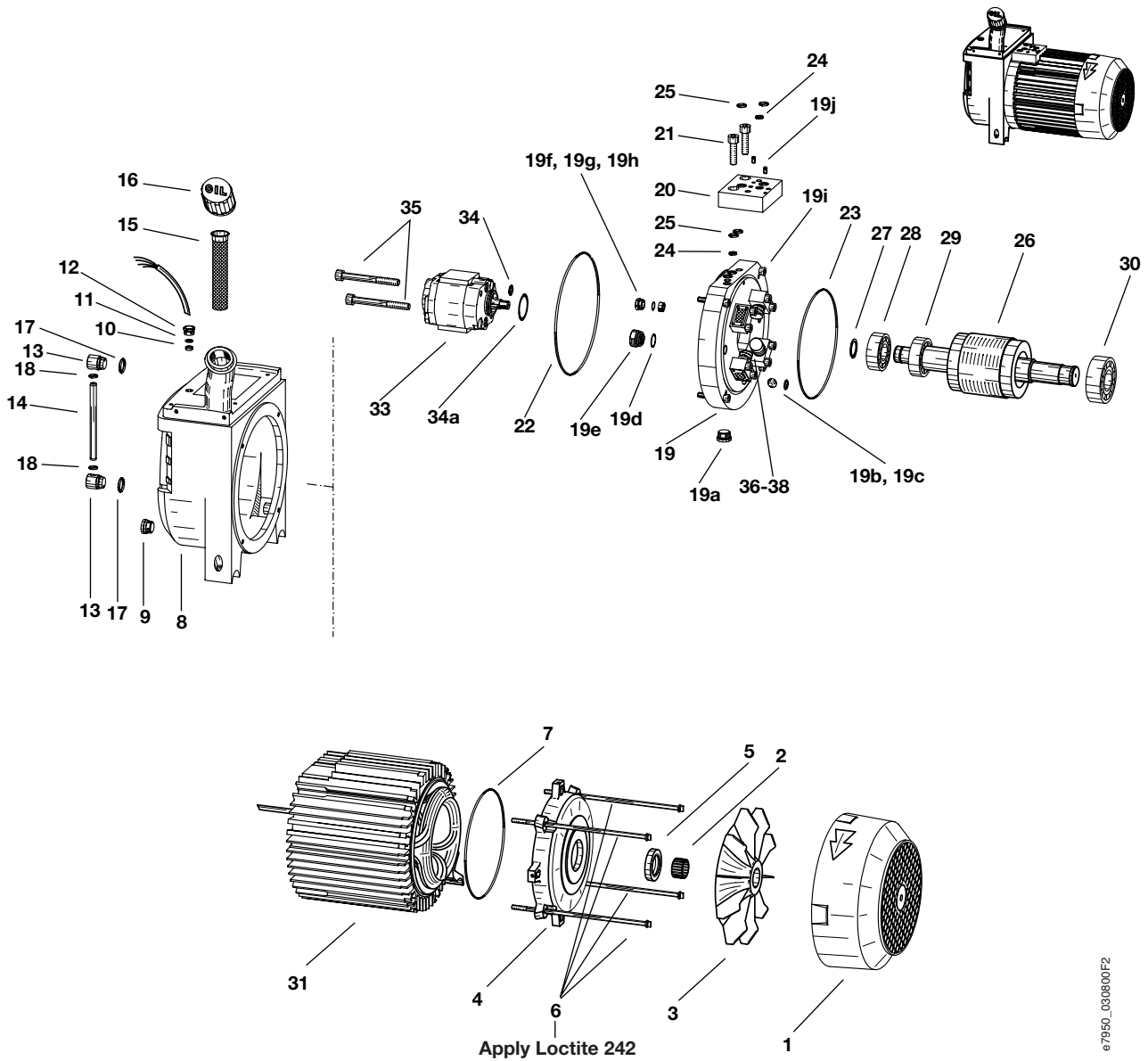


Figure 1, Basic Pump Assembly

Repair Parts List for Figure 1

Item	Part Number	Qty.	Description	Item	Part Number	Qty.	Description
1	★ CBA515028-1B	4	M5 x 10 mm FHCS	18	DC2131026	2	Arrow Decal Motor Rotation
2	★ CBA515028-1D	4	M5 x 10 mm	19	DC2272223	1	Pressure Gauge
3a	★ CBA625028-1A	10	SHCS M6-1 x 30	20	DC2290900SR	1	Overlay Kit
3b	★ CBA621028-1A	1	SHCS M6 x 20	21	DC2284900SR	1	Electrical Assembly
4a	★ CBA819028-1E	2	M8 x 16 mm	25	DC2315026	1	Nameplate
4b	★ CBE1080120-1D	4	Hex Nut M8	26	CH272026	1	Caution Decal
5	★ CBE1060120-1D	7	Nut, M6	27	DA7336026	1	Decal
6	★ CBA817028-1E	2	M8 x 12 mm	29	DA5879026	1	Warning Decal
7	CFM250	1	Coupler, Male CEJN 1/4" FNPT	30	CJ647096	2	Hex Nipple
8	CFF250	1	Coupler, Female CEJN 1/4" FN	31	DC2469900SR	1	Shroud Pump Kit
9	DC2104147	1	Relief Valve Knob	32	DC2287268SR	1	Tube and Fitting Kit
10	DC2101221	1	Base Pump	33	DC2127005SR	1	Skid
13	DC2125037	1	Filler Neck Gasket	34	DC2128111SR	1	Bracket and Bolt Kit
16	DC2129026	1	Enerpac Decal (Bug)	35	DC5234900	1	Overlay Cover

★ Items included in and available only as part of Repair Kit PTEHK.



Item	Nm	Ft. Lbs.
35	20	15
19i	10	7
6	9,5	7
21	40	29
19e	40	29
38	10	7

e7950_030800F2

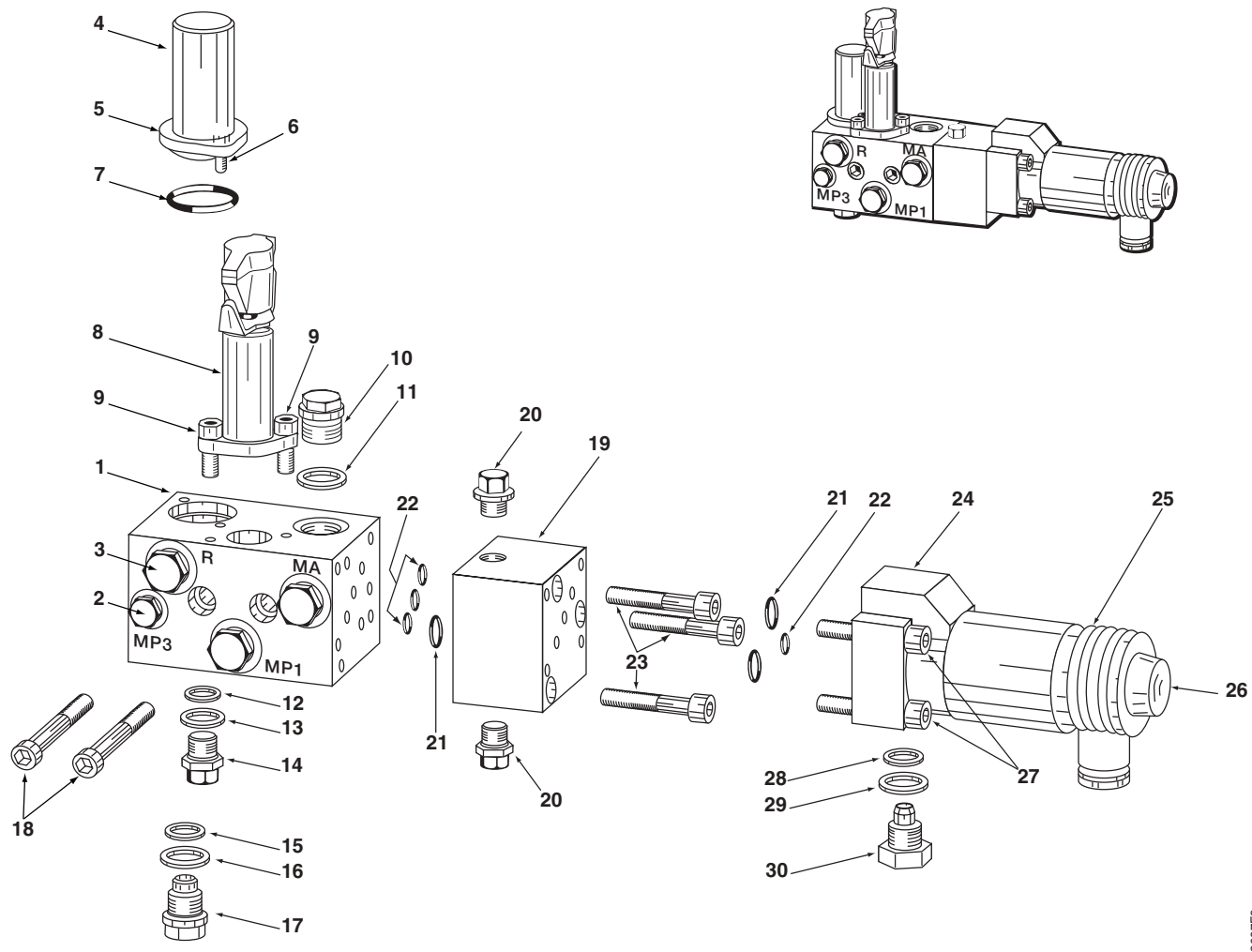
Figure 2

Repair Parts List for Figure 2

Item	Part Number	Qty.	Description	Item	Part Number	Qty.	Description	
1	DC2507900SR	1	Fan Kit, includes:	26	DC2512900SR	1	Motor Shaft Kit, includes:	
	★	1	Motor Shroud		★	1	Motor shaft including rotor	
	2	★	1		Star Tolerance Ring	27	★	1
3	★	1	Fan Wheel ATB	28	★	1	Ball Bearing 6204	
4	DC2508900SR	1	Flange Kit, includes:	29	★	1	Ball Bearing 6205	
	★	1	Bearing Flange	30	★	1	Ball Bearing 6305	
	5	★	1	Shaft Seal Ring	31	★	1	Finned housing including motor winding
	6	★	4	Tension Bolt				
7	★	1	O-ring 145,72x2, 62 NBR 70Sh		DC2601900SR	1	Gear Pump Kit	
8	DC2509900SR	1	Tank Kit, includes:	33	★	1	Gear Pump No. 7950032	
	★	1	Tank	34	★	1	O-ring 9,25x1,78 NBR 90 Sh	
	9	★	1	Plug	34a	★	1	O-ring 28,3x1,78 NBR 90 Sh
	10	★	1	Seal Ring	35	★	2	Socket Head Screw M8x75
	11	★	1	Washer		DC2603900SR	4	Piston Pump Kit
	12	★	1	Retainer Screw	36	★	1	Pump Elements #7350 108
13	DC2510900SR	1	Fluid Level Kit, includes:	37	★	1	O-ring 8,00x2,00 NBR	
	★	2	Plugs	38	★	2	SHCS ISO-2430-M6x35-8.8-Azk	
	14	★	1	Fluid Level Gauge Tube		PTEPK	1	Pump O-ring Kit, includes:
	15	★	1	Wire Mesh Strainer	5	★	1	Shaft Seal BS 25x40x8
	16	★	1	Breather ELESA	10	★	2	Seal ring DIN 43620-6-NBR PG7
	17	★	2	O-ring 13,94x2,62 NBR 70Sh	17	★	2	O-ring 13,94x2,62 NBR 70 Sh
18	★	2	O-ring, 7,65x1,78 NBR 70Sh	18	★	2	O-ring 7,65x1,78 NBR 70 Sh	
19	DC3295900SR	1	Pump Manifold Kit, includes:	19d	★	1	O-ring 14x1,5 NBR 90 Sh	
	★	1	Pump Manifold	19f	★	1	Shaft Seal B25x47x7	
	19a	★	1	Plug	22	★	1	O-ring 9,25x1,78 NBR 90 Sh
	19b	★	1	12 mm Ball	23	★	2	O-ring 28,3x1,78 NBR 90 Sh
	19c	★	1	Circlip 12x1	24	★	2	Kantseal-ring 6,07x1,68 NBR 90 Sh
	19d	★	1	O-ring 14.00x1.5 NBR 90SH	25	★	4	O-ring 8,00x2,00 NBR 90 Sh
	19e	★	1	Check Valve RK3	34	★	1	O-ring 8,00x2,00 NBR 90 Sh
	19f	★	1	Seal Ring	34a	★	1	O-ring 8,00x2,00 NBR 90 Sh
	19g	★	1	Retainer Screw		PTEHK	1	Pump Hardware Kit, includes:
	19h	★	1	Washer	2	DC3409749	1	Star Tolerance Ring 08720-025-05
	19i	★	4	Screw M6x35-8.8	11	DC3417108	2	Washer DIN 46320-8-ST-PG7
	19j	★	2	Pin	12	DC3418028	2	Retainer Screw DIN 46320-3-MS-PG7
	20	★	1	Connection Block	19a	DC3426006	2	Plug DIN 908-G 1/4a ST-A2K-NBR
	21	★	2	Socket Head Screw	19i	CBE627028-1A	7	SHCS ISO 4762-M6X35-8.8-A2K
	22	★	1	O-ring 152,07x2,62 NBR 70Sh	19j	DC3482057	2	Roll Pin ISO 8748-4x8 ST
	23	★	1	O-ring 145,72x2,62 NBR 70Sh	21	CBA825028-1a	2	SHCS ISO 4762-M8x30-12,9
	24	★	1	Kantseal-ring 6,07x1,68 NBR 90 Sh	35	DC3478028	1	SHCS M8x75
25	★	4	O-ring 8,00x2,00 NBR 90 Sh	38	CBE67028-1A	8	SHCS ISO 4762-M6X35-8.8-A2K	

★ Items included in and available only as part of Repair Kits.

NOTE: Use caution not to loose any internal manifold parts when removing plugs from manifold blocks.



L2087F3

Figure 3, Two-stage Valve (view from top of valve)

Repair Parts List for Figure 3

Item	Part Number	Qty.	Description	Item	Part Number	Qty.	Description
1	DC2515660SR	1	Two-stage Valve Kit, includes:	24	DC2517900SR	1	Solenoid Actuated Seated Valve Kit, includes:
2	★	1	Tapped Plug 1/8 HPS	21	★	1	O-ring 5x1,5 NBR 90 Sh
3	★	3	Tapped Plug 1/4 HPS	22	★	2	O-ring 8x1,5 NBR 90 Sh
4	★	1	Housing	25	★	1	Plug MSD 1, complete
5	★	1	Flange	26	★	1	Rubber Cap 41.700 E1020
6	★	2	Socket Head Screw ISO 4762-M4x12-8.8-A2K	27	★	4	Socket Head Screw ISO4762-M6x30-8.8-A2K with lock washer 6 zinc coated 8 m c B
7	★	1	O-ring 21,95 x 1,78 NRB 90 Sh	28	★	1	Seal Ring
8	★		Pressure Limiting ValveType MVB4...R, complete	29	★	1	Washer
9	★	2	Socket Head Screw ISO 4762-M5x16-8.8-A2K	30	★	1	Tapped Plug
—	★	1	O-ring 14x1,78 WRB 90 Sh		PTEVK	1	Valve O-ring Kit, includes:
10	★	1	Tapped Plug	7	★	1	O-ring 21,95x1,78 NBR 90 Sh
11	★	1	Seal Ring DIN 7603-St-A14x18x1,5	11	★	1	Seal Ring DIN 7603-St-A14x18x1,5
12	★	1	Seal Ring	12	★	1	Seal Ring
13	★	1	Washer	13	★	1	Washer
14	★	1	Tapped Plug DIN 910-G1/8A-St-A2K	15	★	1	Seal Ring
15	★	1	Seal Ring	16	★	1	Washer
16	★	1	Washer	21	★	3	O-ring 8.00x1.50 NBR 90 Sh
17	★	1	Taped Plug	22	★	4	O-ring 5.00x1.50 NBR 90 Sh
18	★	2	Socket Head Screw ISO 4762-M6x60-12.9 Zinc Coated	28	★	1	Seal Ring
19	DC2516900SR	1	Intermediate Valve Kit, includes:	29	★	1	Washer
20	★	2	Tapped Plug				
21	★	1	O-ring 8x1,5 NBR 90 Sh				
22	★	3	O-ring 5x1,5 NBR 90 Sh				
23	★	3	Socket Head Screw ISO 4762-M6x35-8.8-A2K				

NOTE: Order DC2514660SR for complete two-stage valve.

★ Items included in and available only as part of Repair Kits.

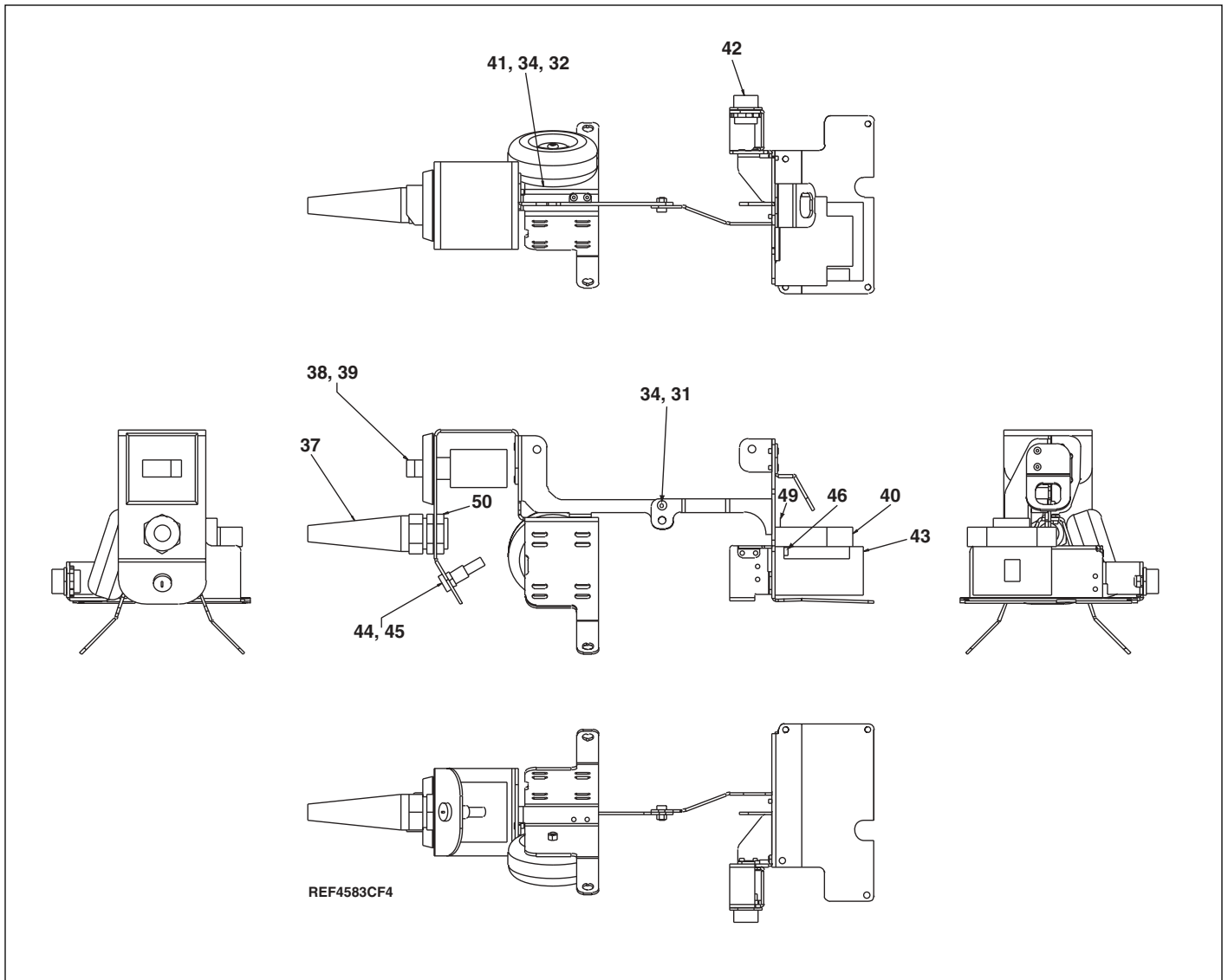


Figure 4, Torque Wrench Pump Electrical Components

Repair Parts List for Figure 4

Item	Part Number	Qty.	Description	Item	Part Number	Qty.	Description
31	CBA515028-1D	1	Screw	45	DC2301378	1	Fuse
32	CCA527028-1A	1	M5 x 35mm Sch Screw	46	CBA417028-1A	2	Socket Head Screw
34	CBE1050120-2A	2	Jam Nut	49	DC2421101	1	Mounting Plate
37	DC2106007	1	Power Cord Grip/ Strin Reli	50	DC2351007	1	Nut Strain Relief
38	DC2110372	1	ABB Switch	—	DC2723382	1	Noise Suppression Capacitor (not shown)
39	DC2111372	1	ABB Handle Switch Selector	—	DA3775006	3	Socket (not shown)
40	DC2112784	1	Timer	—	DC2114380	1	In-line Rectifier (not shown)
41	DC2113480	1	Transformer	—	DA11539380	1	Receptacle (not shown--for solenoid valve)
42	DC2285606	1	Pendant REceptacle				
43	DC2291260	1	A - B Starter				
44	DC2300378	1	Fuse Holder				

★ For complete electrical assembly, order DC2284900SR.

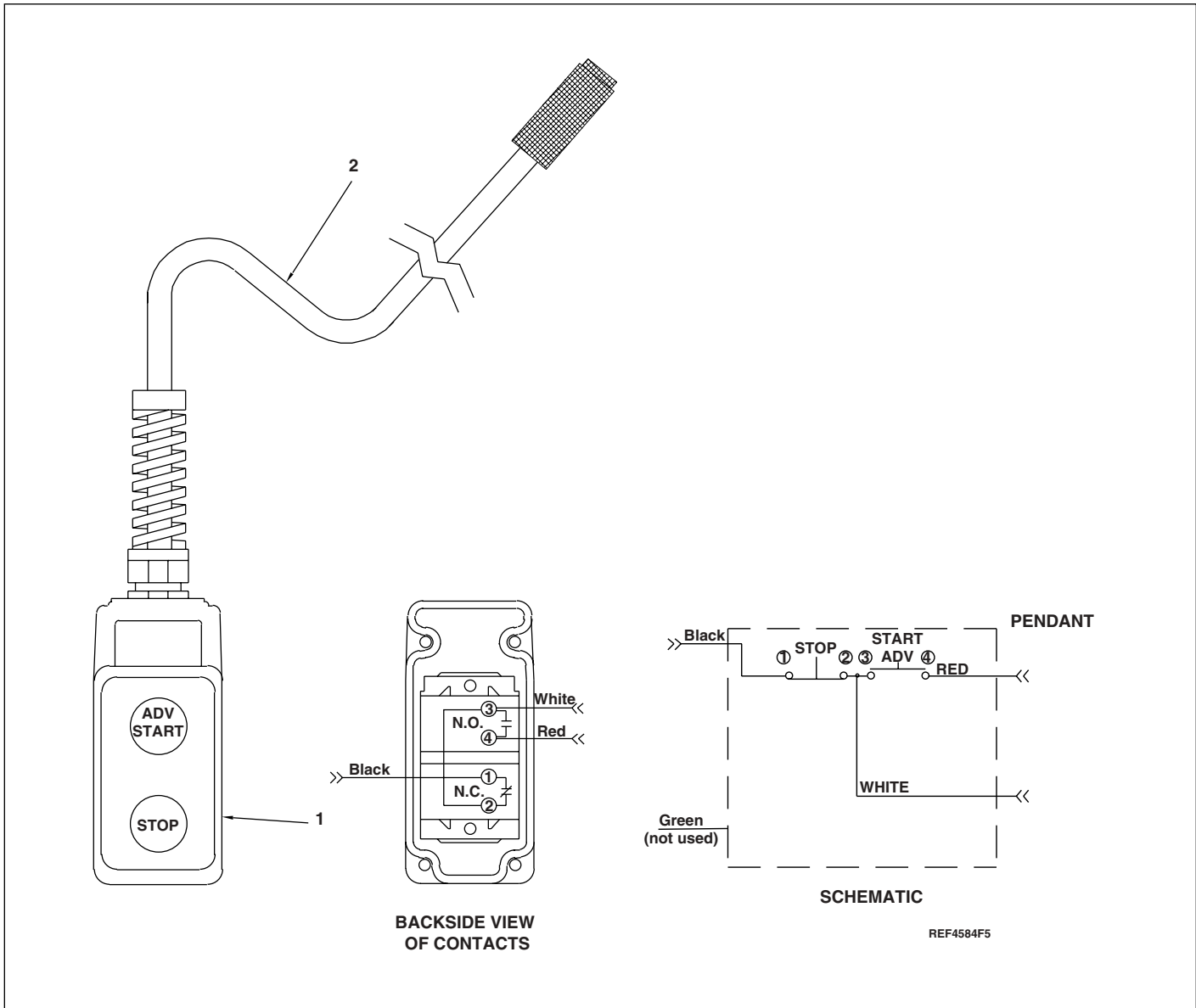


Figure 5, Torque Wrench Pump Pendant

Repair Parts List for Figure 5								
Item	Part Number	Qty.	Description		Item	Part Number	Qty.	Description
1	DC2313900SR	1	Remote Pendant Kit		2	DC2518900SR	1	Cord Assembly

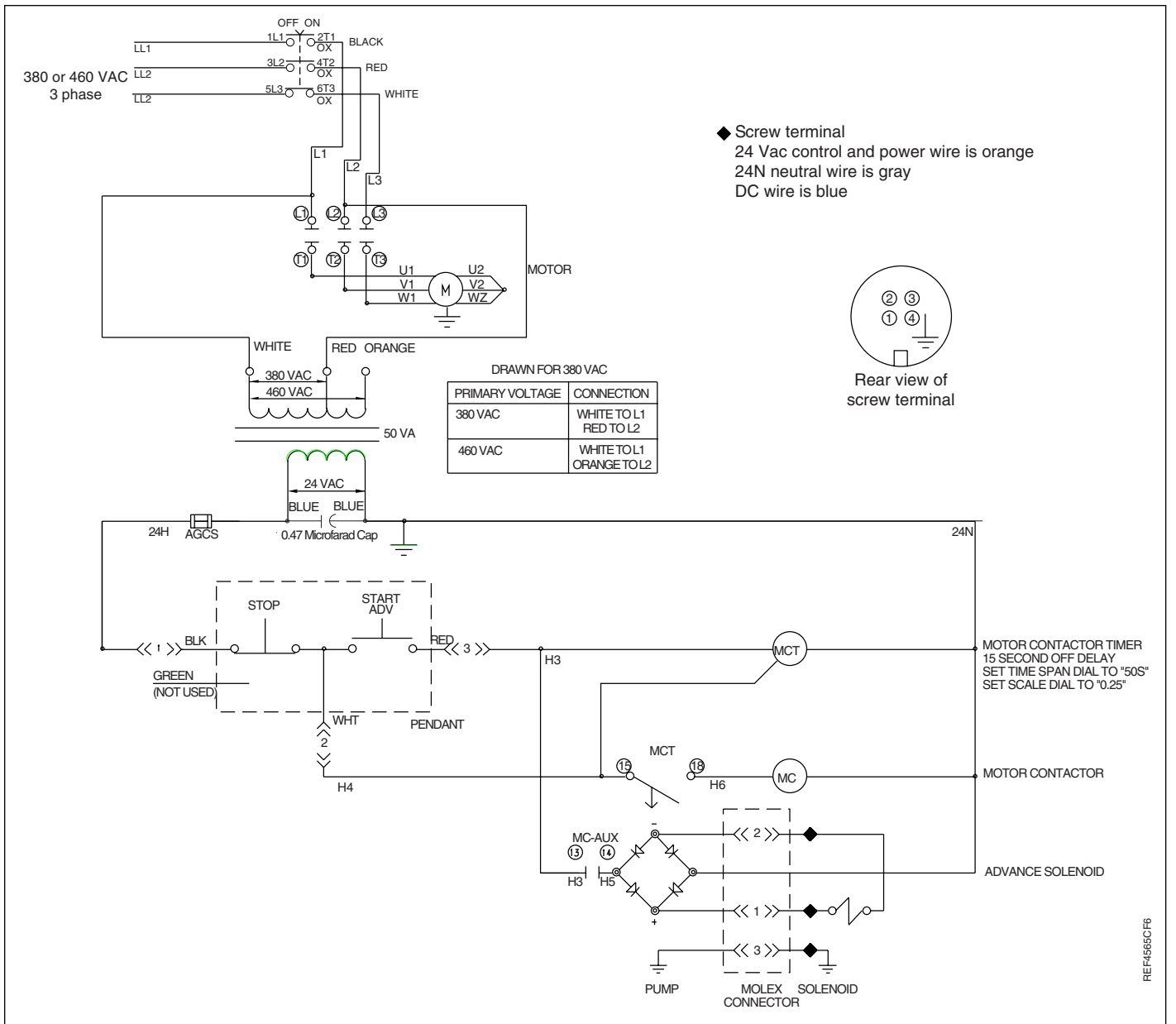


Figure 6, 380 VAC Wire Assembly

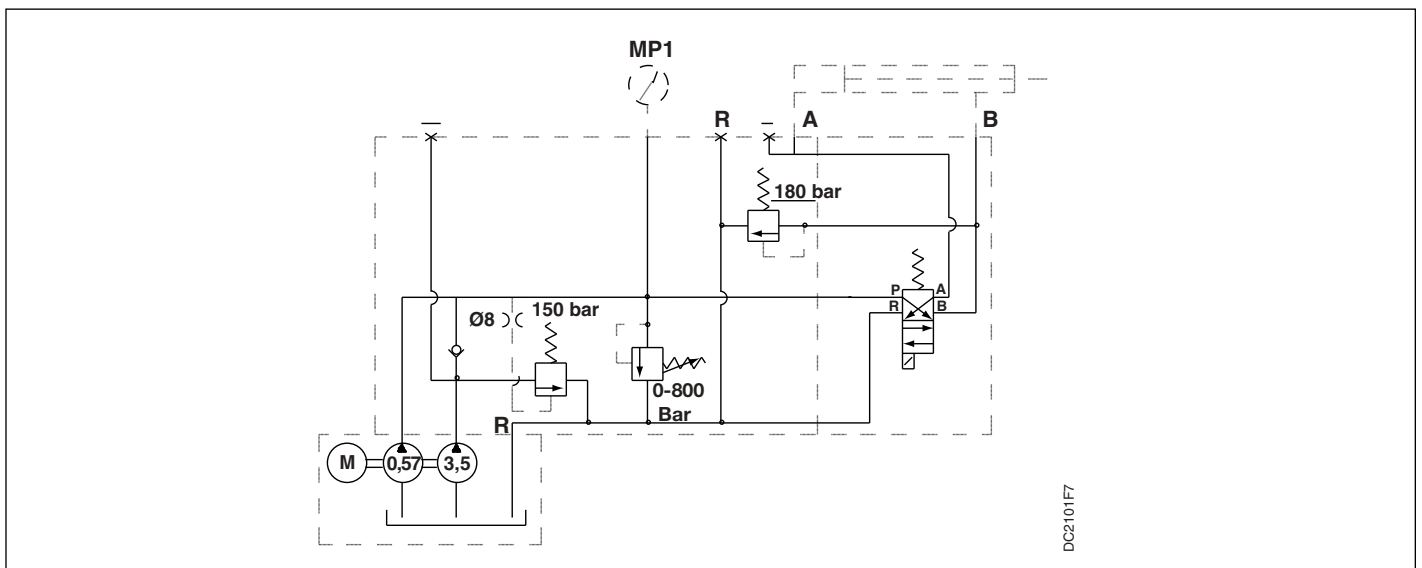
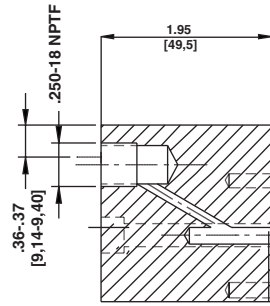
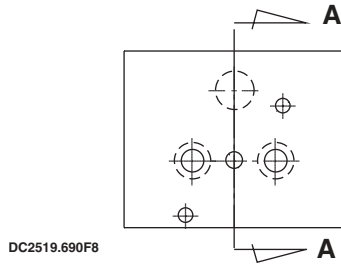
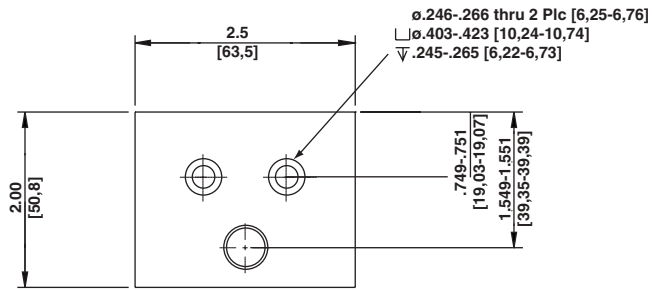


Figure 7, Hydraulic Schematic



SECTION A-A

Note:

This test block is used to back-pressure the pump or test pump pressure. Replace the flow control valve with this item for test purposes.

Figure 8, PTE Pump Test Block

Repair Parts List for Figure 8			
Item	Part Number	Qty.	Description
1	PTEPTB	1	PTE Pump Test Block

Enerpac Worldwide Locations

Australia

ENERPAC, Applied Power Australia Ltd.
Block V Unit 3
Regents Park Estate
391 Park Road
Regents Park NSW 2143
(P.O. Box 261) Australia
Tel: +61 297 438 988
Fax: +61 297 438 648

Canada

Actuant Canada Corporation
6615 Ordan Drive, Unit 14-15
Mississauga, Ontario L5T 1X2
Tel: +1 905 564 5749
Fax: +1 905 564 0305

Toll Free:

Tel: +1 800 268 4987
Fax: +1 800 461 2456

China

Applied Power China Ltd.
1F, 269 Fute N. Road
Waigaoqiao Free Trade Zone
Pudong New District
Shanghai, 200 131
China
Tel: +86 21 5866 9099
Fax: +86 21 5866 7156

Applied Power China (Beijing)
709A Xin No. 2
Diyang Building
Dong San Huan North Rd.
Beijing City, 100028
China
Tel: +86 10 845 36166
Fax: +86 10 845 36220

Applied Power Asia Pte. Ltd
No. 8 Ang Mo Kio Industrial Park 2 #01-00
Singapore 569500
Tel: +65 6484 5108
Tel: +65 6484 3737
Fax: +65 6484 5669

France, Turkey, Greece,

Africa, Middle East

ENERPAC S.A.
B.P. 200
Parc d'Activités
du Moulin de Massy
F-91882 Massy CEDEX (Paris) France
Tel: +33 1 601 368 68
Fax: +33 1 692 037 50

Germany, Switzerland, Austria, Eastern Europe

ENERPAC
Applied Power GmbH
P.O. Box 300113
D-40401 Düsseldorf
Germany
Tel: +49 211 471 490
Fax: +49 211 471 49 28

Hong Kong

ENERPAC
Room 907 Workingberg
Commercial Building
41-47 Marble Road
North Point
Tel: +852-2561 6295
Fax: +852-2561 6772

India

ENERPAC
Hydraulics (India) Pvt Ltd
Plot No. A-571
MIDC, TTC Industrial Area
Mahape-400 701
Navi Mumbai, India
Tel: +91 22 769 47 78
Fax: +91 22 769 84 73

◆ e-mail: info@enerpac.com

Italy

ENERPAC
Applied Power Italiana S.p.A.
Via Canova 4
20094 Corsico (Milano)
Tel: +39 02 4861 1110
Fax: +39 02 4860 1288

Japan

Applied Power Japan Ltd.
1-1-11, Shimomae
Toda-shi
Saitama Pref.
Japan 335-0016
Tel: +81-48-430-2311
Fax: +81-48-430-1117

Mexico

ENERPAC Applied Power
Mexico S.A. de C.V.
Avenida Principal
La Paz #100
Fracc. Industrial La Paz
42092 Pachuca, Hidalgo
Tel: +52 771 71 33700
Fax: +52 771 71 35232

The Netherlands, Belgium, Luxembourg, Sweden, Denmark, Norway, Finland, United Kingdom, Ireland

ENERPAC B.V.
Storkstraat 25
P.O. Box 269, 3900 AG Veenendaal
The Netherlands
Tel: +31 318 535 911
Fax: +31 318 525 613
+31 318 535 848
UK, Ireland
Tel: +44 01527 598 900
Fax: +44 01527 585 500

◆ internet: www.enerpac.com

Singapore

Applied Power Asia Pte Ltd
No. 8, Ang Mo Kio,
Industrial Park 2
#01-00
Singapore 569500
Thomson Road, P.O. Box 114
Singapore 915704
Tel: +65 484 5108
Fax: +65 484 5669

South Korea

ENERPAC
Applied Power Korea Ltd.
163-12 Dodang-Dong
Wonmi-Ku, Buchun-shi
Kyunggi-Do
Republic of Korea
Tel: +82 32 675 08 36
Fax: +82 32 675 30 02/73

Spain, Portugal

ENERPAC
Applied Power International S.A.
Avda. Camino de lo Cortao
21 - Nave 3
San Sebastian de los Reyes
28709 Madrid
Spain
Tel: +34 91 661 11 25
Fax: +34 91 661 47 89

USA, Latin America and Caribbean

ENERPAC
P.O. Box 3241
6101 N. Baker Road
Milwaukee, WI 53209 USA
Tel: +1 262 781 6600
Fax: +1 262 783 9562

User inquiries:

+1 800 433 2766

Distributor inquiries/orders:

+1 800 558 0530

All Enerpac products are guaranteed against defects in workmanship and materials for as long as you own them. For your nearest authorized Enerpac Service Center, visit us at www.enerpac.com

01/24/02

NS0800RO