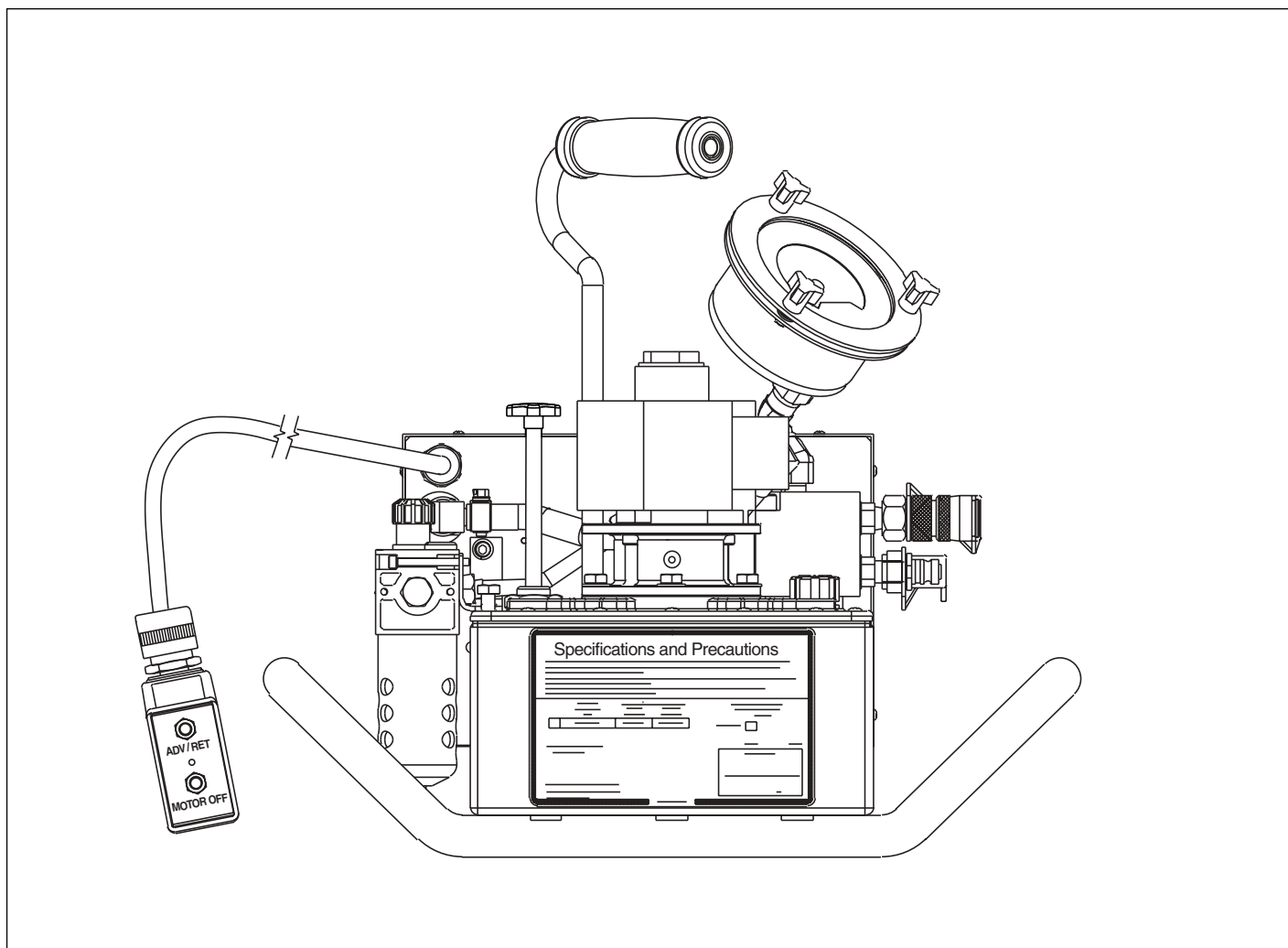


To Protect Your Warranty, Use Only ENERPAC Hydraulic Oil.

Enerpac recommends that all kit components be installed to insure optimum performance of the repaired product.



Contents

Figure 1 — Top and Side Views of Pump	Page 2	Figure 7 — Filter-Lubricator	Page 9
Figure 2 — Front View of Pump.....	Page 4, 5	Figure 8 — Pump Assembly (Top View)	Page 10
Figure 3 — Basic Pump Assembly	Page 6, 7	Figure 9 — Pump Assembly (Side View).....	Page 11, 12
Figure 4 — By-Pass Block Assembly.....	Page 8	Figure 10 — Pump Schematic	Page 13
Figure 5 — Piston Block Assembly	Page 8	Figure 11— Air Valve Assembly.....	Page 14
Figure 6 — Relief Valve Assembly	Page 9	Figure 12 — Pendant Assembly.....	Page 15

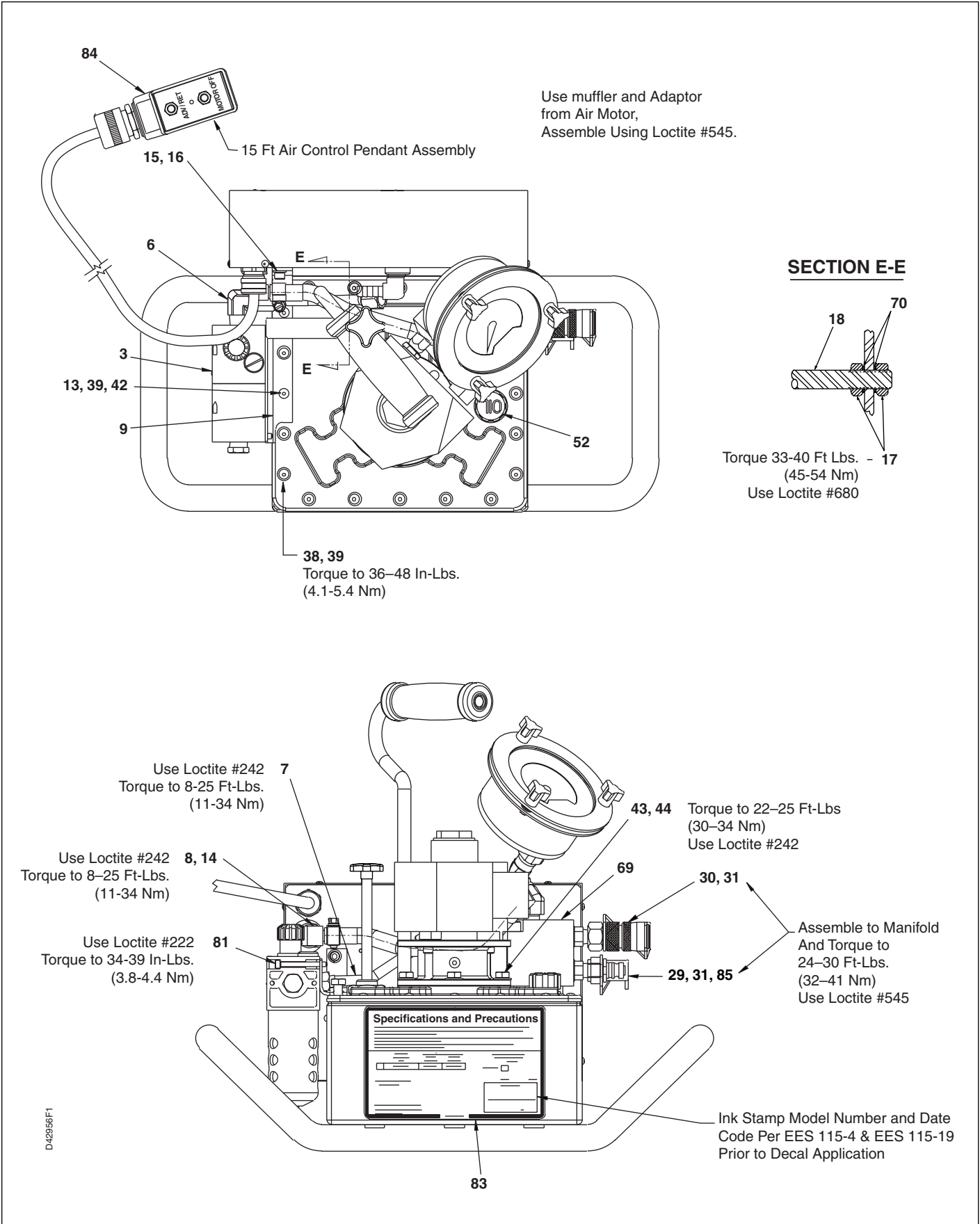
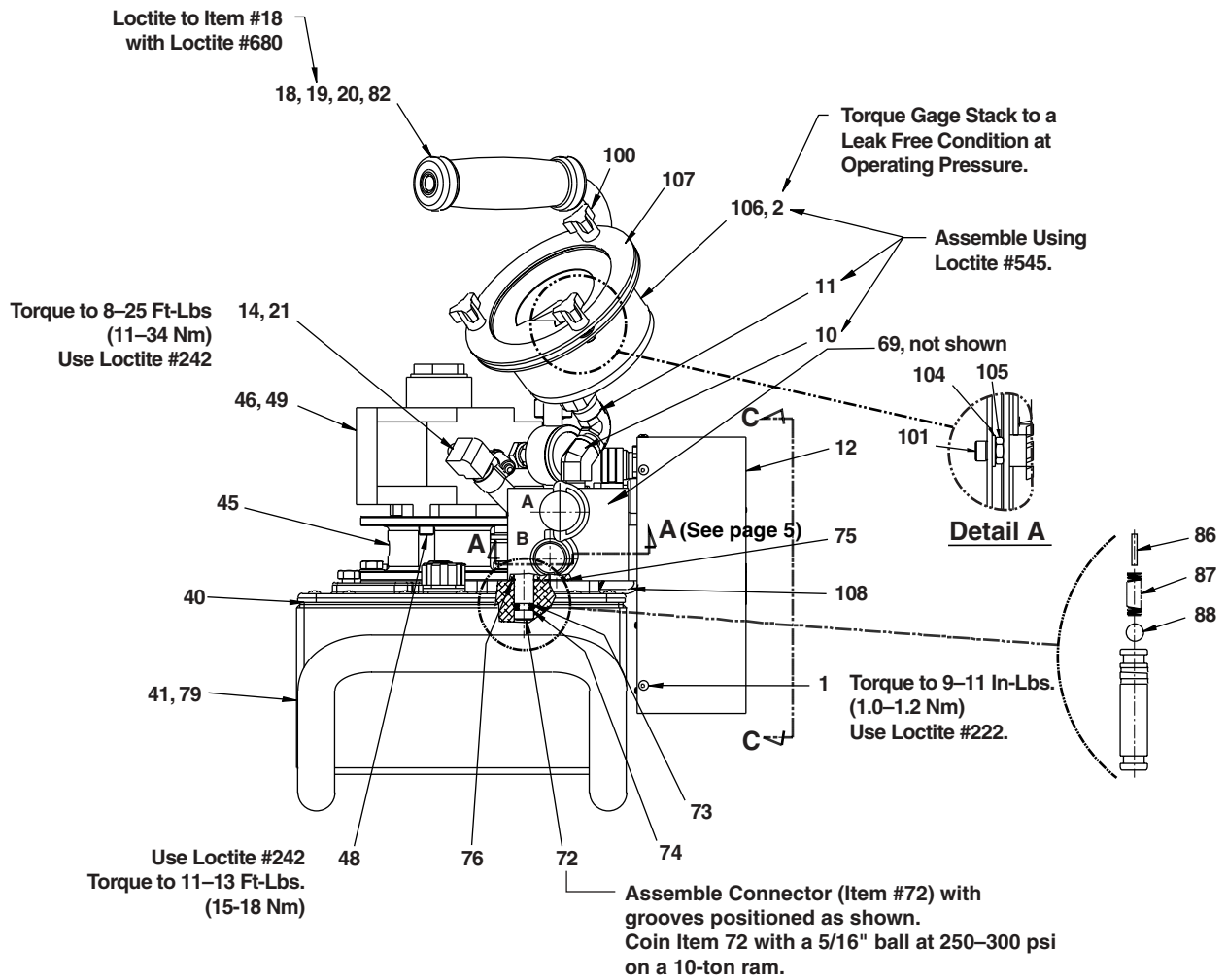


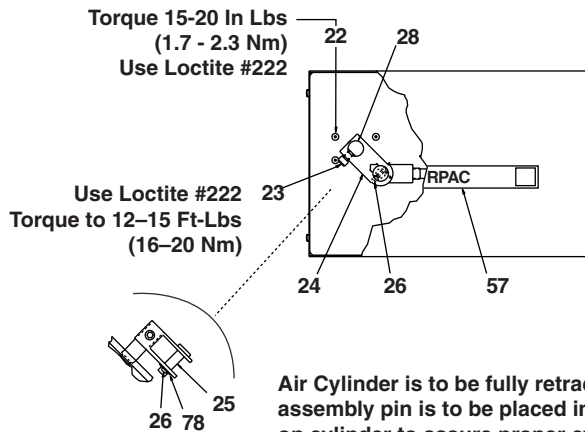
Figure 1, Top and Side Views of Pump

Repair Parts List for Figure 1

Item	Part Number	Qty.	Description	Item	Part Number	Qty.	Description
3	U962097911	1	Filter Lubricator Assembly See Fig. 7, page 9	31	CJ647096	2	Hex Nipple
6	F100094-4	1	Male Elbow	38	★	18	Resv. Mtg. O-ring
7	U962097268-5	1	Tube Assembly	39	DA12301046	20	Screw
8	U962097646	1	Air Hose	42	★	2	O-ring
9	U962097111-3	1	Filter Mounting Bracket	43	CAE 1080108-IA	4	Washer
13	★	2	Gasket	44	CBE823046-1B	4	Hex Bolt
14	DA10742299	2	Hose Clamp	52	DA4051020	1	Breather Cap
15	B1003028	1	Socket Head Cap Screw	69	CCA841028-1A	4	Socket Head Cap Screw
16	B1015066	1	Washer	70	★	2	Gasket
17	B1010124	2	Hex Jam Nut	81	B1336028	2	Screw
18	U962097070	1	Handle	83	DC2975026	1	Name Plate
29	CFF250	1	Coupler	84	DC3147900SR	1	Pendant Assembly. See Figure 12, page 15
30	CMF250	1	Coupler	85	CK837096	1	Coupling
★ Items included in and available only as part of Repair Kit PTA-1404K.							



View C-C
Air Cylinder Detail



D:\2356F2

Figure 2, Front View of the Pump

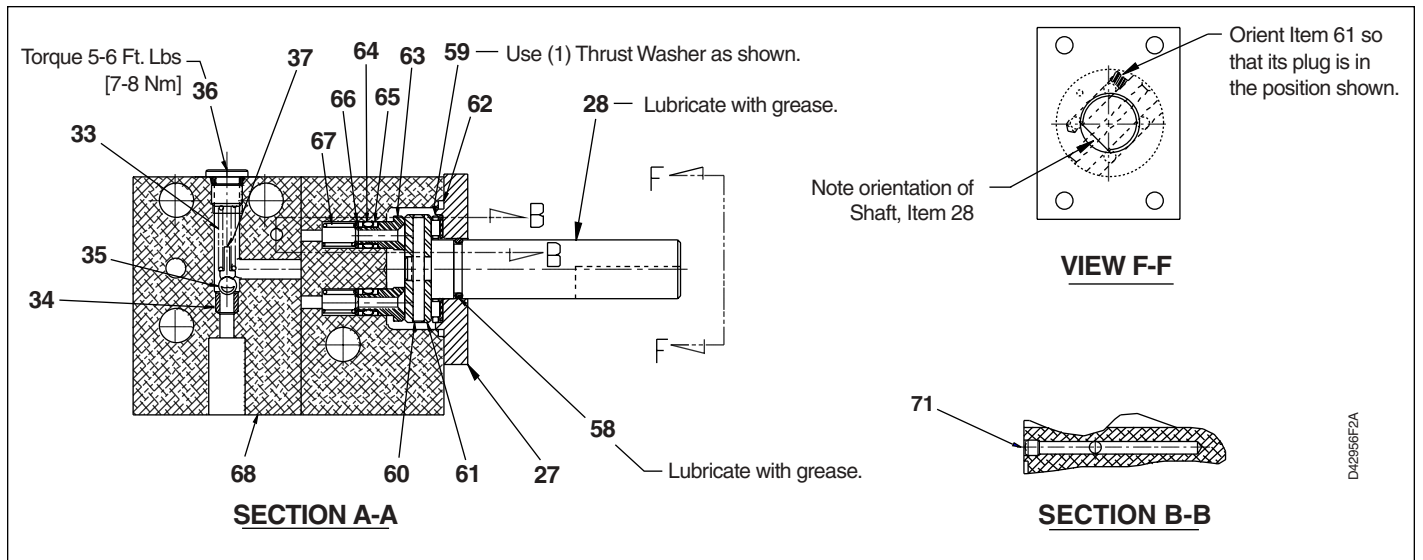


Figure 2A, Valve Assembly

Repair Parts List for Figure 2 and 2A

Item	Part Number	Qty.	Description	Item	Part Number	Qty.	Description
1	M642028	8	Screw Capscrew	59	C940155	1	Bearing
2	DC2272223	1	Gauge	60	B1040057	1	Spring Pin
10	F100095	1	45° Street Elbow	61	DA7289900SR	1	Plug and Disc Assembly
11	F100095-7	1	90° Elbow	62	★	1	O-ring
12	U962097424	1	Shroud	63	★	3	Shear Seal Poppet
14	DA10742299	1	Hose Clamp Assembly	64	★	3	O-ring
18	U962097070	1	Handle	65	★	6	Back-up Washer
19	U962097446	1	Handle Sleeve Poppet	66	★	3	Washer
20	DA7319070	1	Handle	67	★	3	Spring
21	DA5414095	1	Coupling Washer	68	DC2990190	1	Manifold
22	CCA421028-1A	4	SHSC Screw	69	CCA841028-1A	4	SHCS M8 x 70
23	B1002028	1	Screw	71	F100009-52	1	Ball Plug
24	U962097062	1	Link Arm	72	DC2331096	1	Connector Tube
25	U962097058-1	1	Pin	73	★	2	Back Up
26	B1017058	1	Cotter Pin	74	★	2	O-ring Viton
27	U962097098-2	1	Insert	75	★	1	O-ring
28	U962097104-1	1	Shaft Valve	76	★	1	O-ring
33	U962097110	1	Compression Spring	78	B1026108	1	Washer
34	★	1	Seat	79	C187018	1	Magnet
35	★	1	3/16" dia. Ball	82	DA7570217	1	Velcro Cord Strap
36	B1001006	1	SAE #2 Hex Socket	86	B1037057	1	Roll Pin
37	F522570	1	Ball Cap	87	S1183	1	Spring
40	★	1	O-ring	88	★	1	5/16" Ball
41	DC2976025	1	Reservoir	100	DA7858147	3	Knob
45	U962097038-3	1	Motor Adaptor	101	B1326028	3	#10-32 SHCS. .75 LG
46	DC2987259	1	Air Motor	104	B1072066	3	#10 Lock Washer
48	B1005028	3	.250-20 UNC x .625 SHCS	105	B1018121	3	Hex Nut
49	BA0320059	1	Dowel Pin	106	DC2035004	1	Front Flange Mount
57	DC2813026	1	Yellow Decal	107	DC2926004	1	Flange
58	★	1	O-ring				

★ Items included in and available only as part of Repair Kit PTA-1404K.

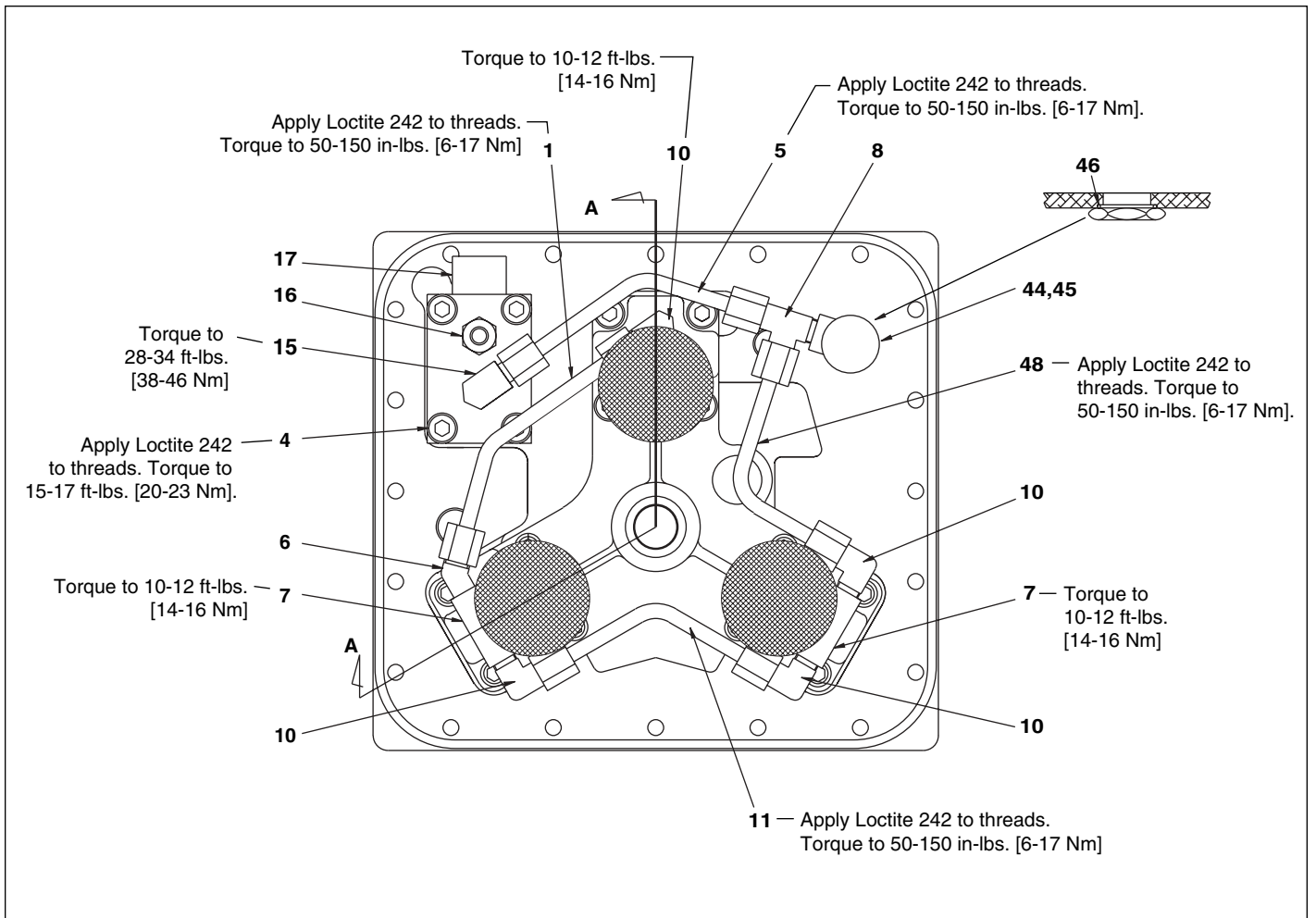


Figure 3, Basic Pump Assembly

Repair Parts List for Figure 3

Item	Part Number	Qty.	Description	Item	Part Number	Qty.	Description
1	DA8851268	1	Tube	15	F100094-90	1	Long Elbow
4	CCA837028-1A	16	Socket Head Cap Screw	16	DA7266095	1	Hose Fitting
5	U962097268	1	Tube Assembly	17	U962097908SR	1	By-pass Valve Assembly
6	DA10238094	1	45° Elbow	44	U962097906-1SR	1	Relief Valve Assembly
7	F100097-31	2	Male Branch Tee	45	DA6884123		Jam Nut
8	F100094-1	1	Male Rum Tee	46	★	1	O-ring
10	B202291	4	Male Elbow	48	U962097268-1	1	Tube Assembly
11	DA8853268	1	Tube				

★ Items included in and available only as part of Repair Kit PTA-1404K..

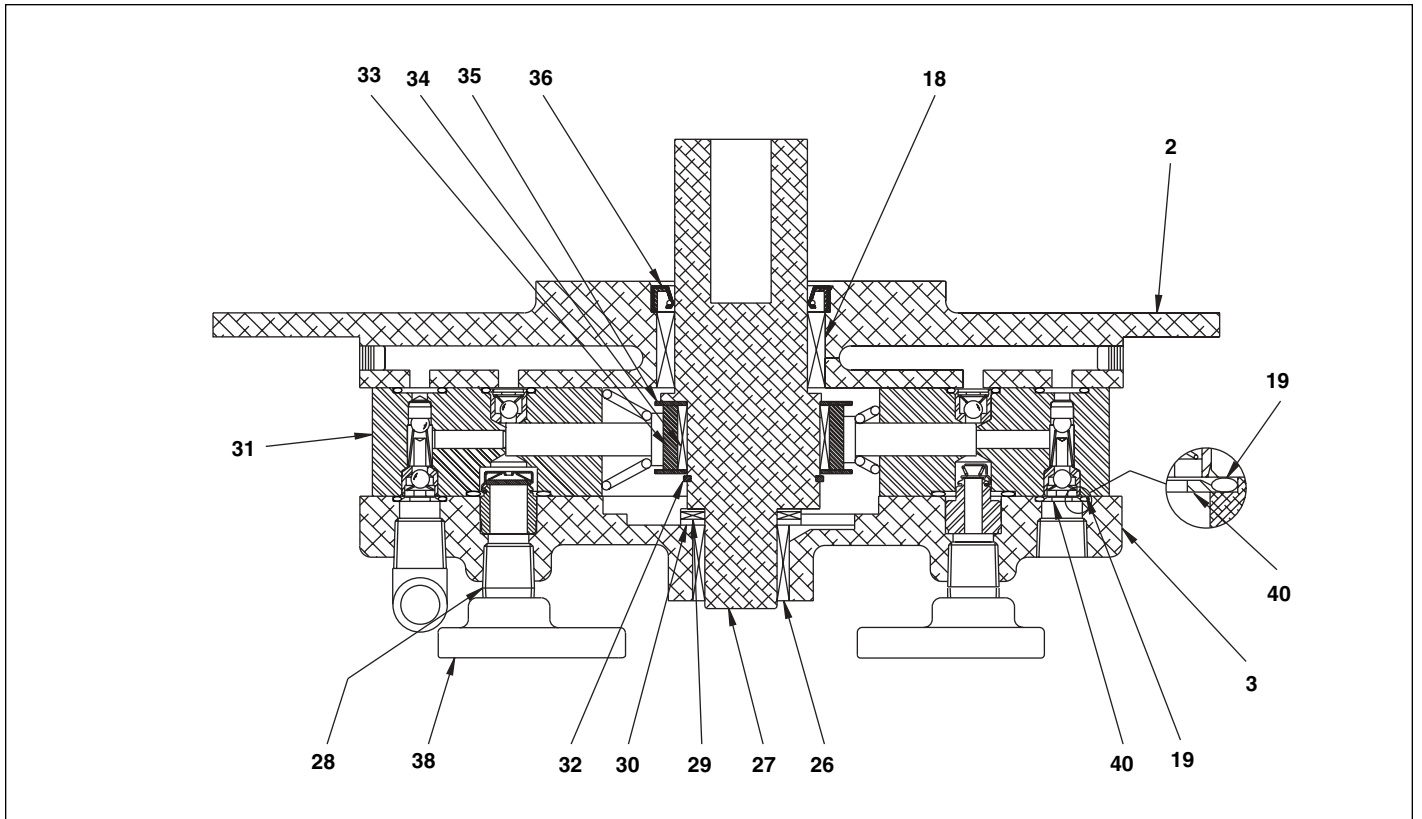


Figure 3A

Repair Parts List for Figure 3A							
Item	Part Number	Qty.	Description	Item	Part Number	Qty.	Description
2	U962097098-1	1	Pump Coverplate	31	U962097909SR	3	Piston Block Assembly
3	DA6940101SR	1	Bottom Plate	32	CCA1035044-1A	1	Retaining Ring
18	DA7275155	1	Needle Roller Bearing	33	DA3837350	1	Hex Cam
19	★	3	O-ring	34	BSS4599D	1	Needle Bearing
26	DA6821155	1	Bottom Bearing	35	BSS4725D	2	Ring
27	DA12173537	1	Eccentric	36	★	1	Lip Seal
28	DA6411431	3	Pipe Nipple	38	DA7867900	3	Filter Assembly
29	DA7064155	1	Thrust Bearing	40	DA10723108	3	Washer
30	DA7065155	2	Thrust Races				

★ Items included in and available only as part of Repair Kit PTA-1404K.

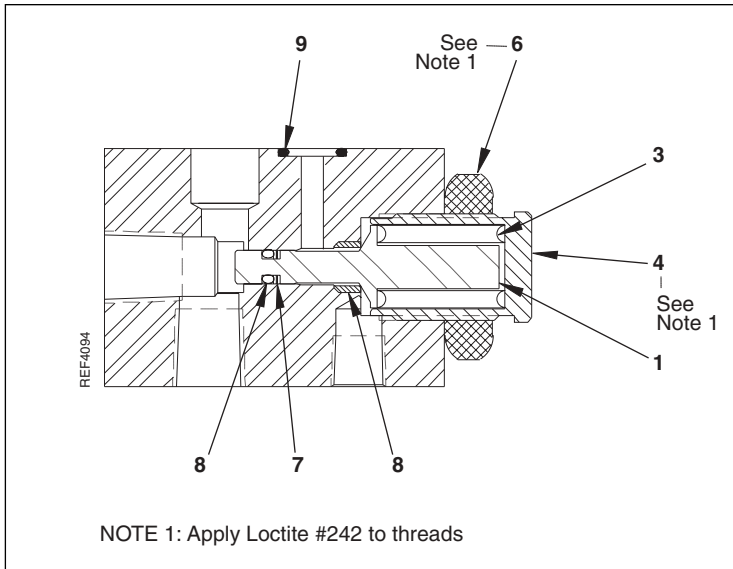


Figure 4, By-pass Block Assembly

Repair Parts List for Figure 4			
Item	Part Number	Qty.	Description
1	DC475051	1	Piston
3	DC394110	1	Spring
4	DC477020	1	Cap, Adjuster
5	DC476290	1	Seat
6	DA6884123	1	Jam Nut (Genesis)
7	★	1	B/U Washer
8	★	1	O-Ring .12 x .25 x .06
9	★	1	O-Ring

★ Items included in and available only as part of Repair Kit PTA-1404K.

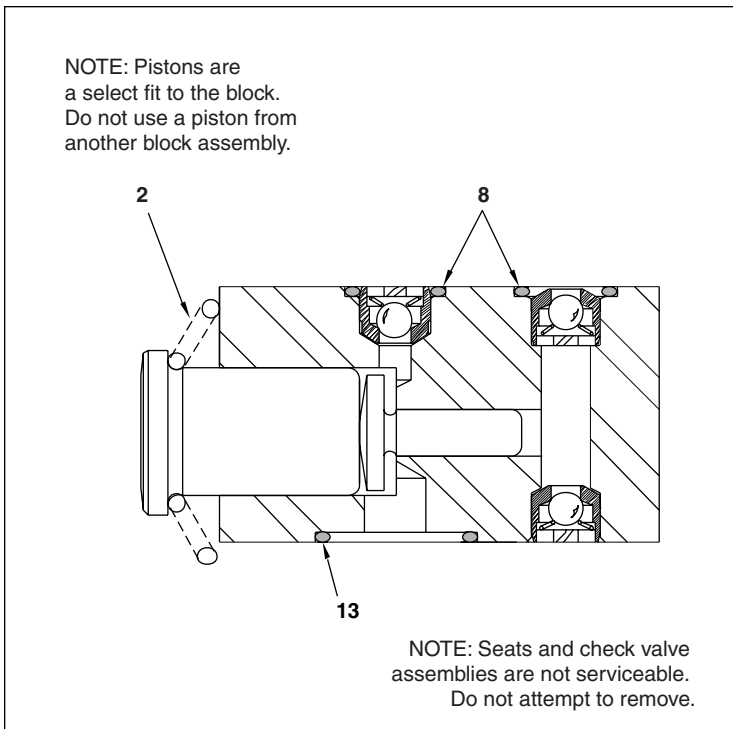


Figure 5, Piston Block Assembly

Repair Parts List for Figure 5			
Item	Part Number	Qty.	Description
2	DA7037210	1	Conical Spring
8	★	2	O-Ring
13	★	1	O-Ring

★ Items included in and available only as part of Repair Kit PTA-1404K.

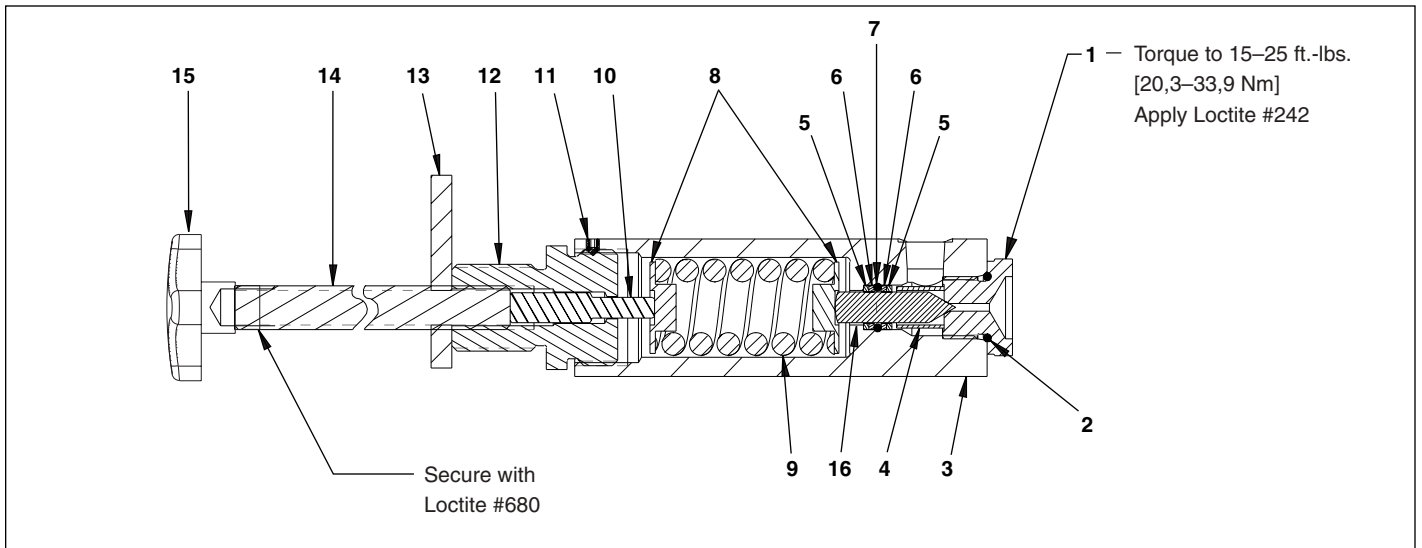


Figure 6, Relief Valve Assembly

Repair Parts List for Figure 6

Item	Part Number	Qty.	Description	Item	Part Number	Qty.	Description
1	DC2077290	1	Seat	9	CS357110	1	Spring
2	★	1	O-ring	10	DC2078040	1	Plunger
3	DC2049190	1	Body	11	CCA307028-5A	1	M3 x 4MM Set Screw
4	DC2076013	1	Piston Guide	12	DC2079190	1	Threaded Body
5	CB956186	2	Spacer	13	U962210123	1	Nut
6	★	2	Back-up Ring	14	U962209107	1	M10 x 1.5 Threaded Rod
7	★	1	O-ring	15	DC2617070	1	Knob
8	DC2075013	2	Spring Guide	16	DC2074051	1	Piston

★ **Seal Kits** — Used whenever pump unit is disassembled for service. Contains seals only.

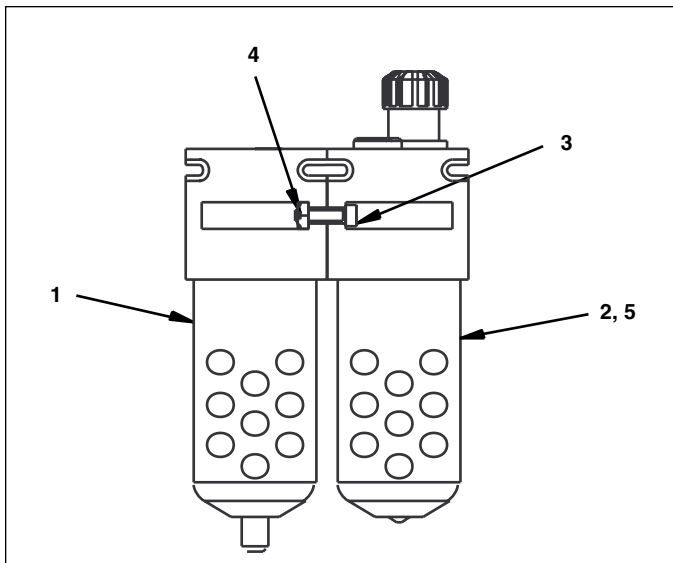


Figure 7, Filter-Lubricator

Repair Parts List for Figure 7			
Item	Part Number	Qty.	Description
1	U962097118-1	1	In-line Air Filter
2	U962097119-1	1	In-line Air Lubricator
3	B1326028	2	#10-32 Socket Head Capscrew .7 Lg
4	U962097120	2	Hex "KEPS" Nut (10-32)
5	★	1	Quad Ring

NOTE: Fill lubricator with pneumatic oil. Use 4 oz. bottle of pneumatic oil supplied with pump. Reference part number U962097835.

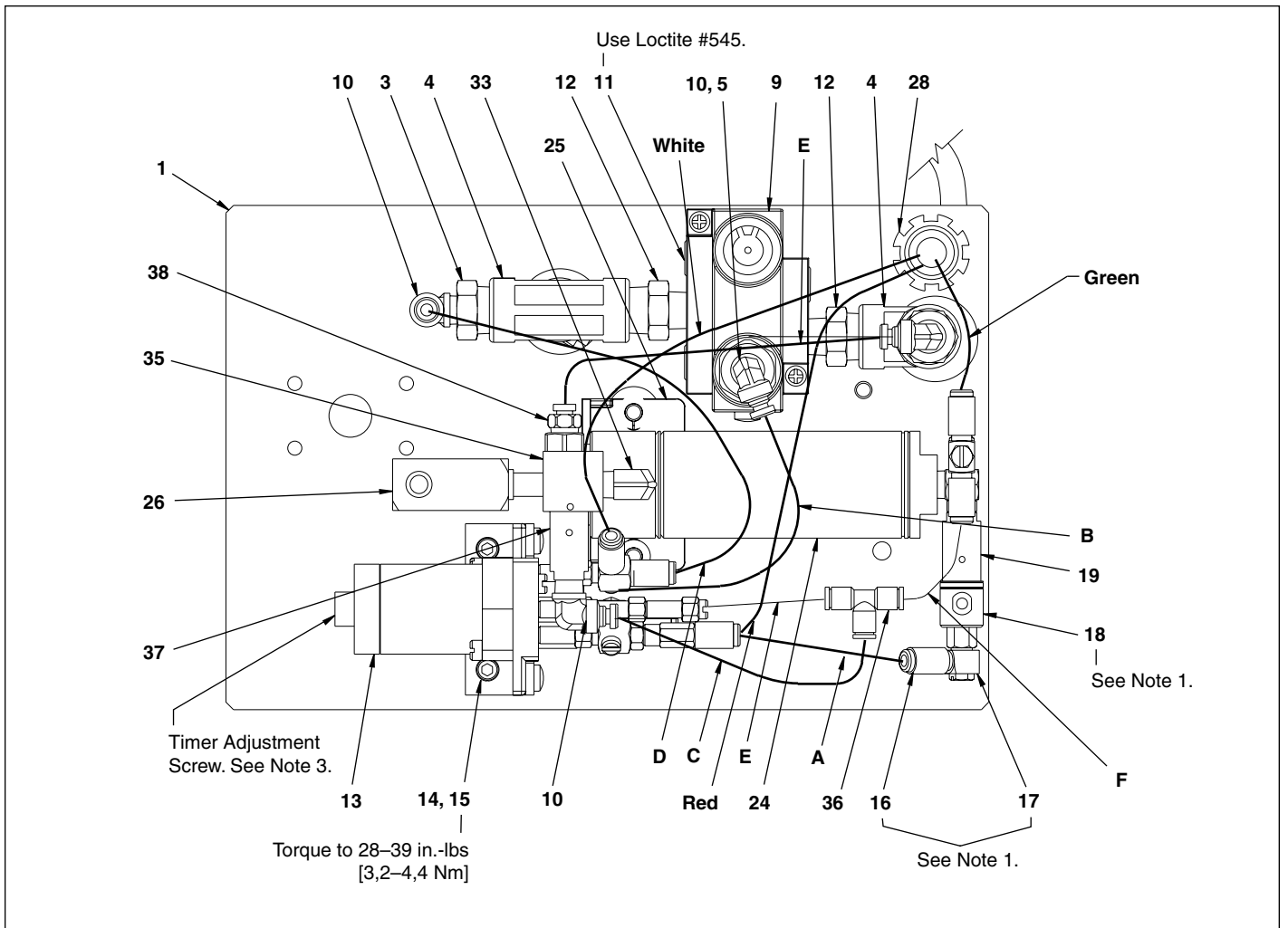


Figure 8, Air Control Assembly Top View

NOTE 1: Use Loctite 222 on threads. Torque to 7-9 in.-lbs. [0,8-1,0 Nm].

NOTE 2: See table for approximate lengths for air tubing, Item 6.

NOTE 3: Set timer so that the console will shut off between 10-30 seconds after the Advance/Retract button is released.

Tube	Length
A	4.50
B	6.00
C	3.50
D	10.5
E	7.50
F	2.50

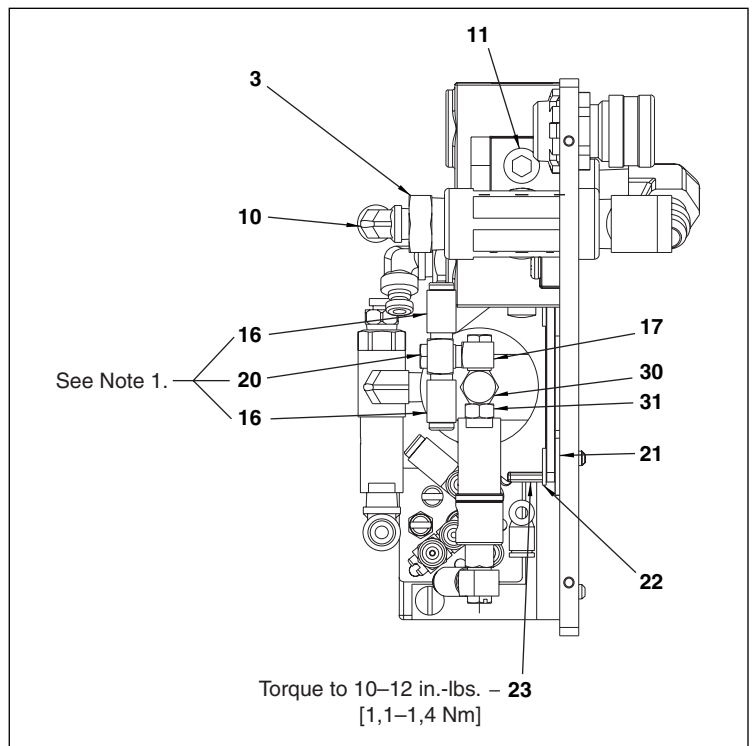


Figure 9, Air Control Assembly Side View

Repair Parts List for Figure 8 & 9

Item	Part Number	Qty.	Description	Item	Part Number	Qty.	Description
1	U962097098-3	1	Mtg/Cover Plate	19	U962097860	1	Pilot Actuator
2	DC3147900SR	1	Pendant Assembly	20	U962097097-9	1	#10 Adjustable "T" Fitting
3	F100095-25	2	Pipe Thread Reducer	21	B1094108	2	Washer
4	CJ652096	2	Pipe Tee	22	B1001066	2	.25 Lockwasher
5	DA313217	1	Cable Tie	23	B1003028	2	.250-20 UNC x .50 SHCS
6	U962097268-4	1	34.5 in. Air Tubing	24	U962097030	1	Air Cylinder
9	U962097660-3	1	Air Valve	25	U962097111	1	Bracket
10	U962097097-12	4	90° Elbow .12NPT-.156 Tube	26	U962097056	1	Clevis
11	A1008245	3	1/4 Flush Plug w/Sealant	28	CJ458885	1	Lock nut
12	CN443096	2	Pipe Nipple	30	U962097097-11	1	"T" Fitting .125NPT - #10-3
13	U962097910	1	Valve Assembly	31	U962097097-4	1	Short Coupling
14	B1080066	2	Lockwasher #10	33	F100095-68	1	Male Pipe Elbow
15	B1322028	2	Capscrew	35	U962097660-6	1	3-way, 2-position Valve
16	U962097097-5	4	Press-on Fitting	36	U962097097-13	1	Tee Air
17	U962097097-8	2	Adjustable L Fitting	37	U962097860-1	1	Pilot Actuator
18	U962097660-5	1	2-way Control Air Valve	38	DA10741095	1	Fitting

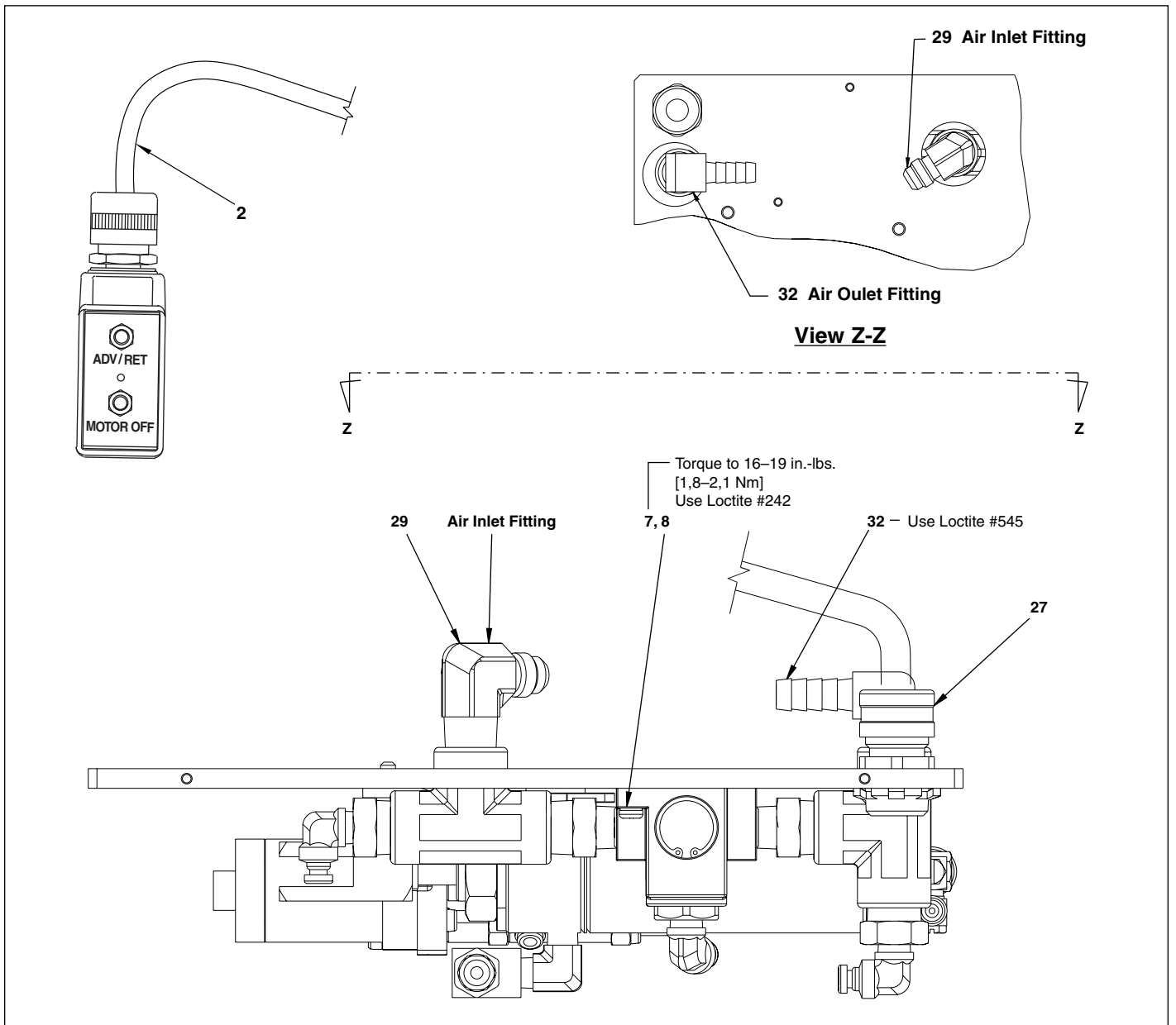


Figure 9A, Air Control Assembly Front View

Repair Parts List for Figure 9A							
Item	Part Number	Qty.	Description	Item	Part Number	Qty.	Description
2	DC3147900SR	1	Pendant Assembly	27	F104550-9	1	Connector
7	U962097028	2	Truss Head Mach. Screw	29	F100094-4	1	Male Elbow
8	B1063066	2	#8 Lockwasher	32	DA5414095	1	Coupling

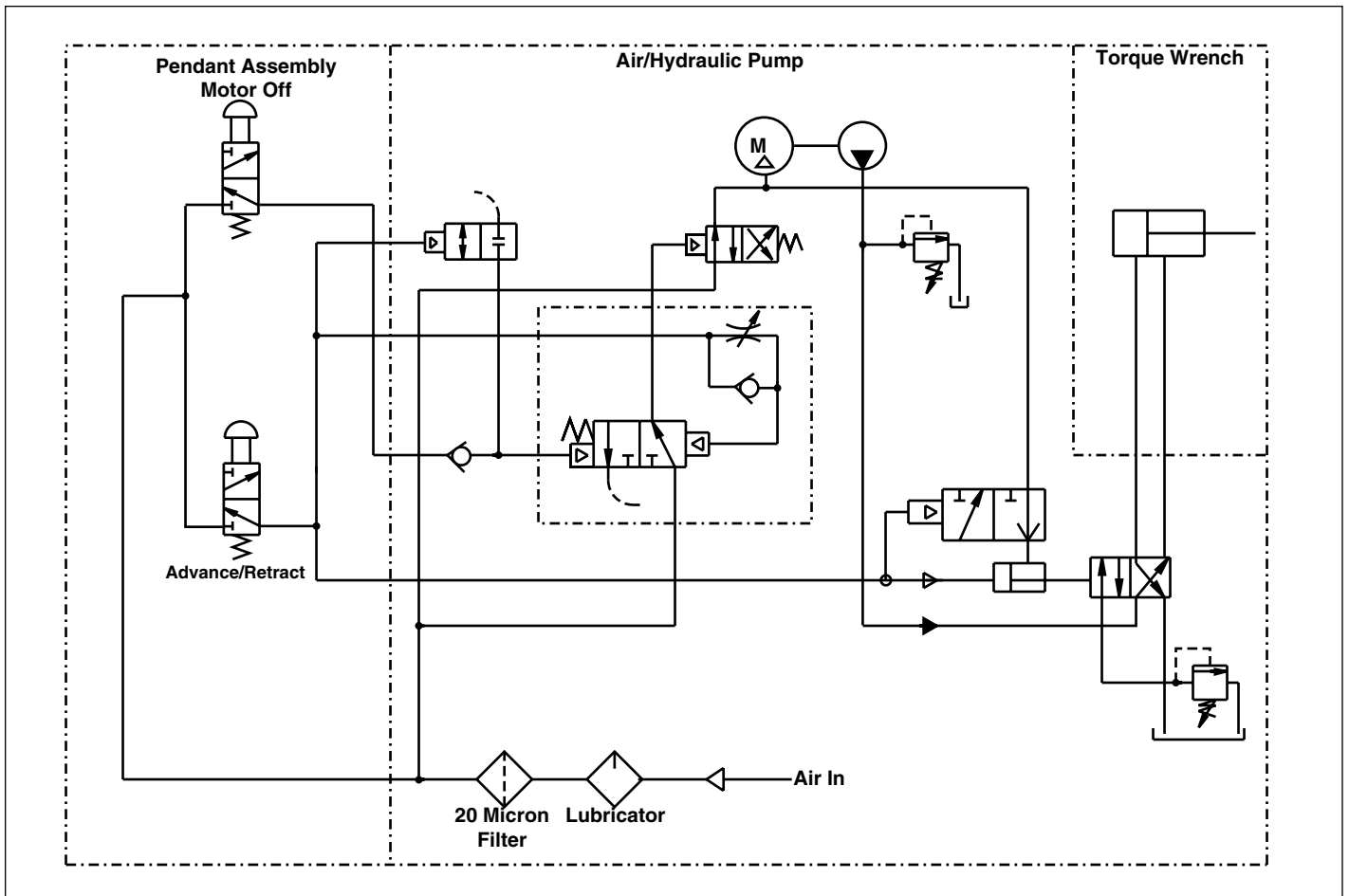


Figure 10, Air/Hydraulic Schematic

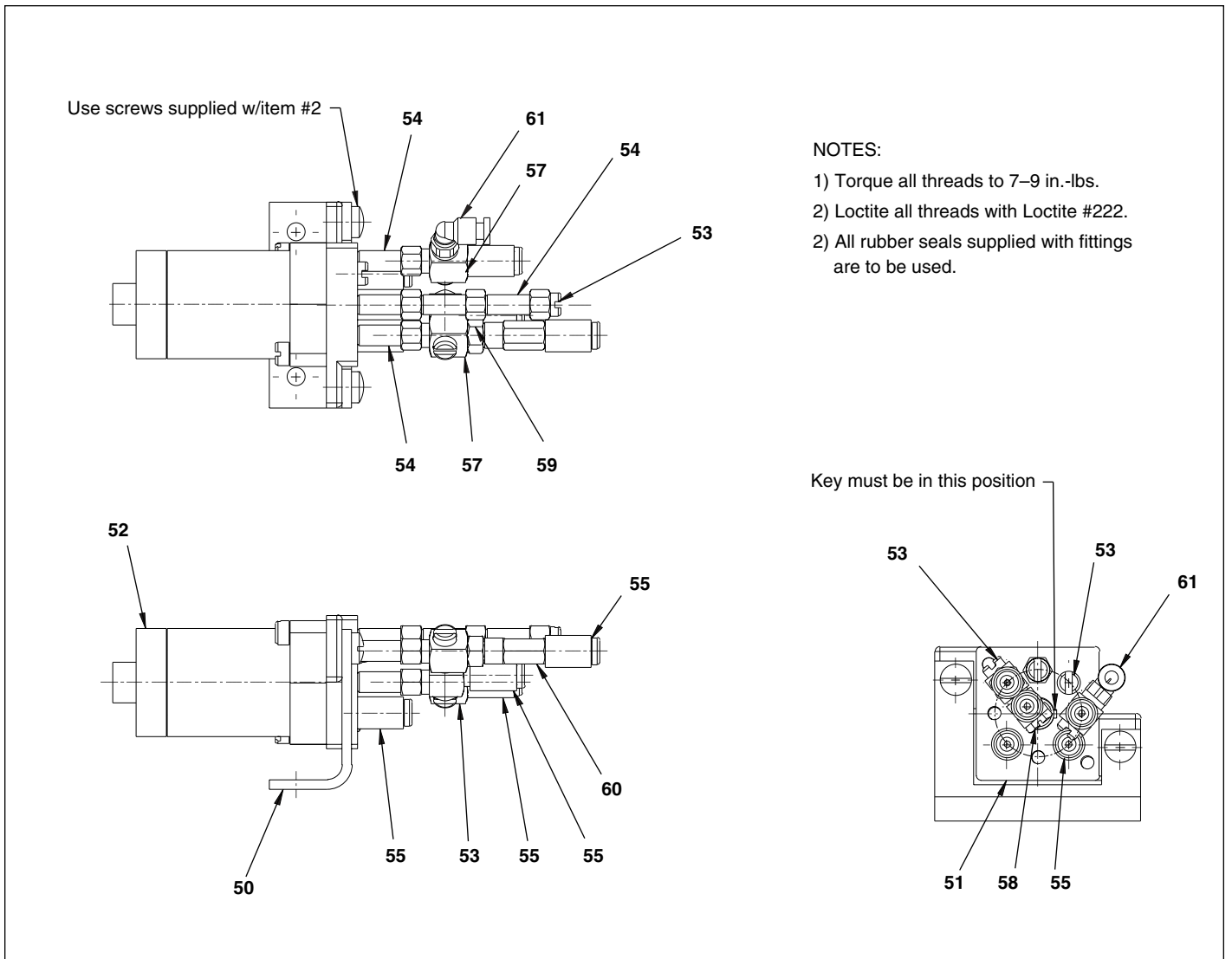


Figure 11, Air Valve Assembly

Repair Parts List for Figure 11

Item	Part Number	Qty.	Description	Item	Part Number	Qty.	Description
50	U962097111-2	1	Mounting Bracket	57	U962097097-1	2	90° Elbow
51	U962097101	1	Sub-plate	58	U962097097-8	2	Adjustable L-fitting
52	U962097660-4	1	Air Timer Module	59	U962097097-4	1	Short Coupling
53	U962097097-6	4	Screw Plug	60	U962097097-2	1	Check Valve
54	U962097097-3	5	Extension Fitting	61	U962210096	1	Elbow
55	U962097097-5	5	Fitting				

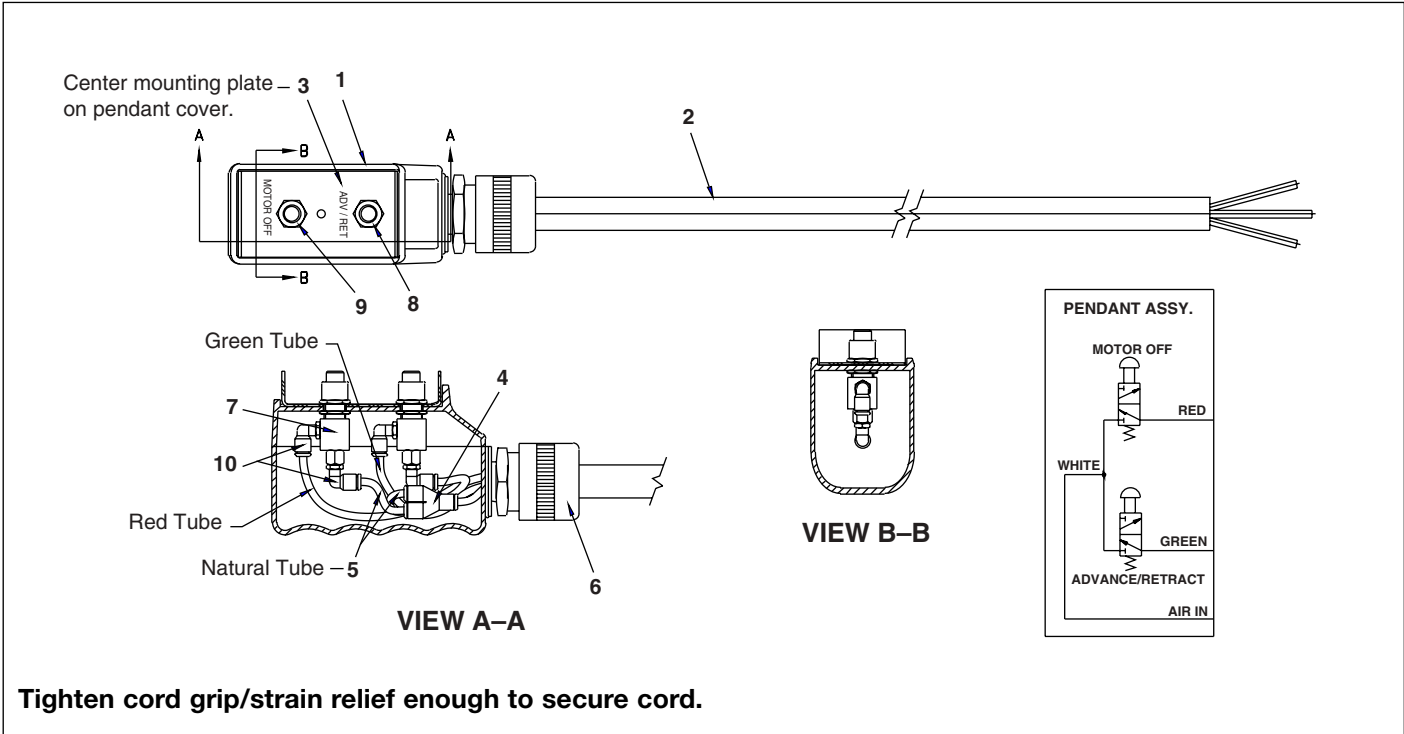


Figure 12, Pendant Assembly

Repair Parts List for Figure 12							
Item	Part Number	Qty.	Description	Item	Part Number	Qty.	Description
1	DC3065190	1	Pendant Body	6	F104550-9	1	Cord Grip
2	U962210646	1	Air Hose	7	DC3066660	2	Push Botton Valve
3	DC3146101	1	Mounting Plate	8	DC3062379	1	Push Button, Green
4	DC3574097	1	"Y" Female to Female	9	DC3579097	1	Push Button, Red
5	DC3575268	2	Air Tube	10	DC3064270	4	Male Connector Elbow

Enerpac Worldwide Locations

✦ e-mail: info@enerpac.com

✦ internet: www.enerpac.com

Australia

ENERPAC, Applied Power Australia Ltd.
Block V Unit 3
Regents Park Estate
391 Park Road
Regents Park NSW 2143
(P.O. Box 261) Australia
Tel: +61 297 438 988
Fax: +61 297 438 648

Canada

Applied Power Canada Ltd.
6615 Ordan Drive, Unit 14-15
Mississauga, Ontario L5T 1X2
Tel: +1 905 564 5749
Fax: +1 905 564 0305

Toll Free:

Tel: +1 800 268 4987
Fax: +1 800 461 2456

China

Applied Power China Ltd.
1F, 269 Fute N. Road
Waigaoqiao Free Trade Zone
Pudong New District
Shanghai, 200 131
China
Tel: +86 21 5866 9099
Fax: +86 21 5866 7156

France, Turkey, Greece, Africa, Middle East

ENERPAC S.A.
B.P. 200
Parc d'Activités
du Moulin de Massy
F-91882 Massy CEDEX (Paris) France
Tel: +33 1 601 368 68
Fax: +33 1 692 037 50

Germany, Switzerland, Austria, Eastern Europe

ENERPAC
Applied Power GmbH
P.O. Box 300113
D-40401 Düsseldorf
Germany
Tel: +49 211 471 490
Fax: +49 211 471 49 28

Hong Kong

ENERPAC
Room 907 Workingberg
Commercial Building
41-47 Marble Road
North Point
Tel: +852-2561 6295
Fax: +852-2561 6772

India

ENERPAC
Hydraulics (India) Pvt Ltd
Plot No. A-571
MIDC, TTC Industrial Area
Mahape-400 701
Navi Mumbai, India
Tel: +91 22 769 47 78
Fax: +91 22 769 84 73

Italy

ENERPAC
Applied Power Italiana S.p.A.
Via Canova 4
20094 Corsico (Milano)
Tel: +39 2 486 111 00
Fax: +39 2 486 012 88

Japan

Applied Power Japan Ltd.
1-1-11, Shimomae
Toda-shi
Saitama Pref.
Japan 335-0016
Tel: +81-48-430-2311
Fax: +81-48-430-1117

Mexico

ENERPAC Applied Power
Mexico S.A. de C.V.
Avenida Principal
La Paz #100
Fracc. Industrial La Paz
42092 Pachuca, Hidalgo
Tel: +52 771 337 00
Fax: +52 771 838 00

The Netherlands, Belgium, Luxembourg, Sweden, Denmark, Norway, Finland, United Kingdom, Ireland

ENERPAC B.V.
Storkstraat 25
P.O. Box 269, 3900 AG Veenendaal
The Netherlands
Tel: +31 318 535 911
Fax: +31 318 525 613
+31 318 535 848
UK, Ireland
Tel: +44 01527 598 900
Fax: +44 01527 585 500

Singapore

Applied Power Asia Pte Ltd
No. 8, Ang Mo Kio,
Industrial Park 2
#01-00
Singapore 569500
Thomson Road, P.O. Box 114
Singapore 915704
Tel: +65 484 5108
Fax: +65 484 5669

South Korea

ENERPAC
Applied Power Korea Ltd.
163-12 Dodang-Dong
Wonmi-Ku, Buchun-shi
Kyunggi-Do
Republic of Korea
Tel: +82 32 675 08 36
Fax: +82 32 675 30 02/73

Spain, Portugal

ENERPAC
Applied Power International S.A.
Avda. Camino de lo Cortao
21 - Nave 3
San Sebastian de los Reyes
28709 Madrid
Spain
Tel: +34 91 661 11 25
Fax: +34 91 661 47 89

USA, Latin America and Caribbean

ENERPAC
P.O. Box 3241
6101 N. Baker Road
Milwaukee, WI 53209 USA
Tel: +1 262 781 6600
Fax: +1 262 781 1049

User inquiries:

+1 800 433 2766

Distributor inquiries/orders:

+1 800 558 0530

All Enerpac products are guaranteed against defects in workmanship and materials for as long as you own them.
For your nearest authorized Enerpac Service Center, visit us at www.enerpac.com