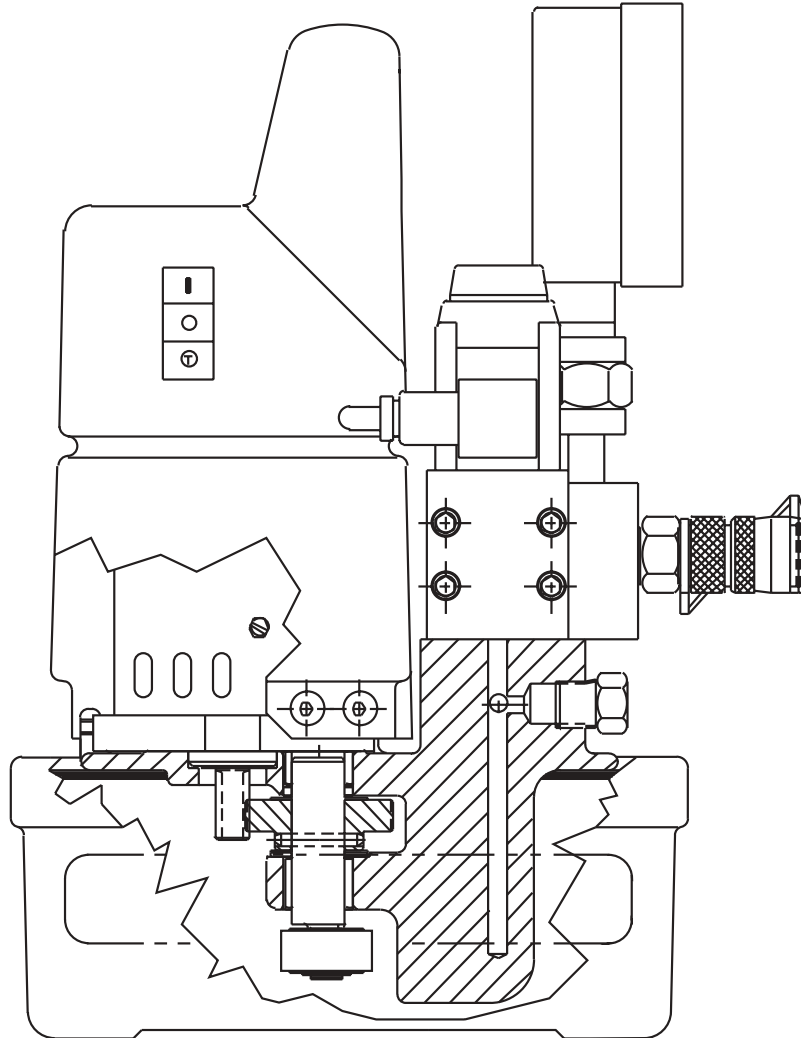


To Protect Your Warranty, Use Only ENERPAC Hydraulic Oil.

Enerpac recommends that all kit components be installed to insure optimum performance of the repaired product.



Contents

Figure 1 - Pump Side View	2-3	Figure 10 - Shroud Wiring-Left of Motor.....	6-7
Figure 2 - Pump Front View	2-3	Figure 11 - Shroud Wiring-Right of Motor	6-7
Figure 3 - Relief Valve	2-3	Figure 12 - Top View-Cord and Cables	6-7
Figure 4 - Pump Bottom View	2-3	Figure 13 - Pendant Assembly	7
Figure 5 - Pump Top View	3	Figure 14 - Poppet Valve	8
Figure 6 - Wiring Diagram	4-5	Figure 15 - Poppet Valve Assembly.....	9
Figure 7 - Wiring Diagram	4	Figure 16 - Poppet Valve Assembly.....	9
Figure 8 - Shroud Wiring-Behind Motor	6-7	Figure 17 - Unloading Valve	10
Figure 9 - Shroud Wiring-Front of Motor	6-7	Figure 18 - Electrical Schematic	10

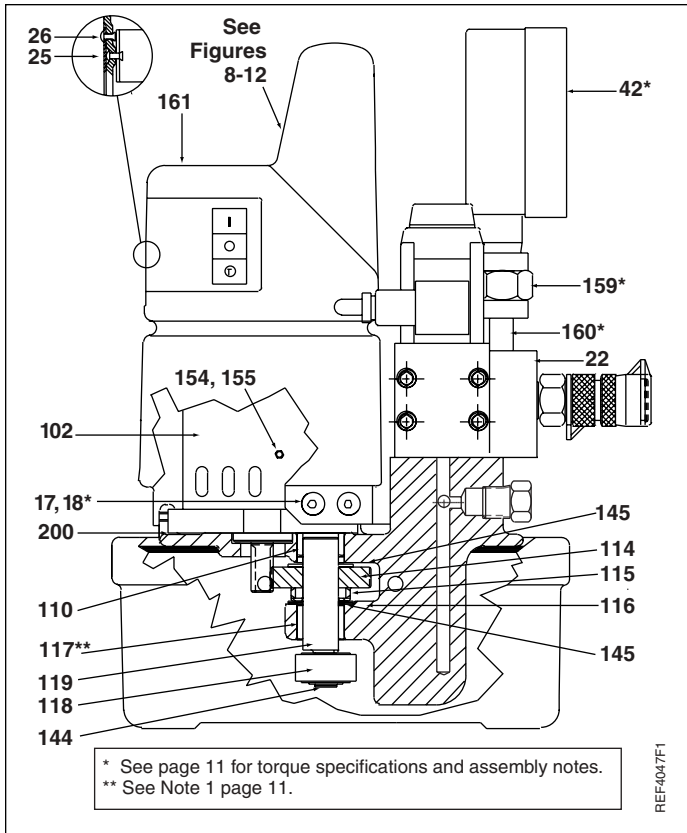


Figure 1, Pump Side View

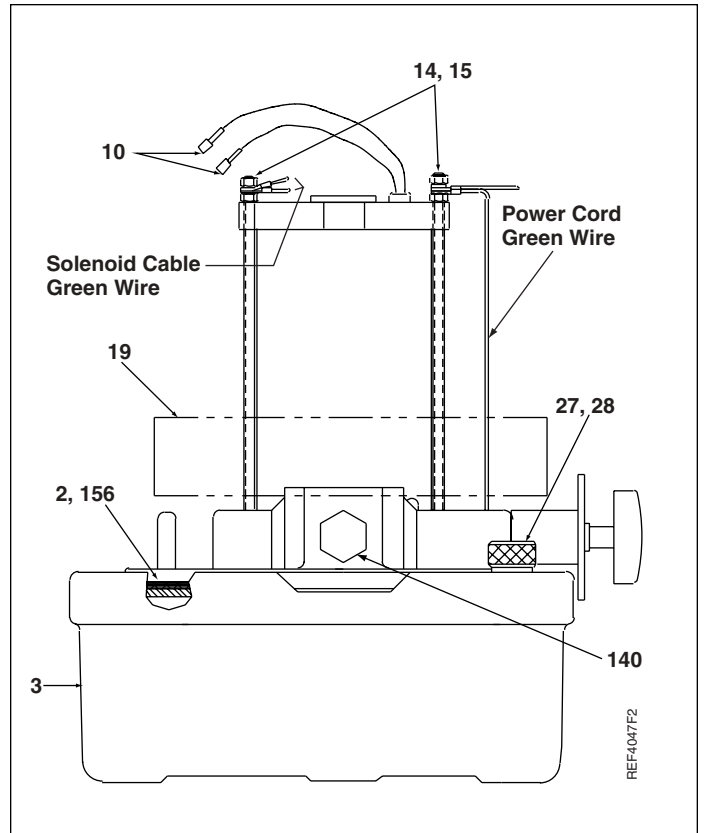


Figure 2, Pump Front View

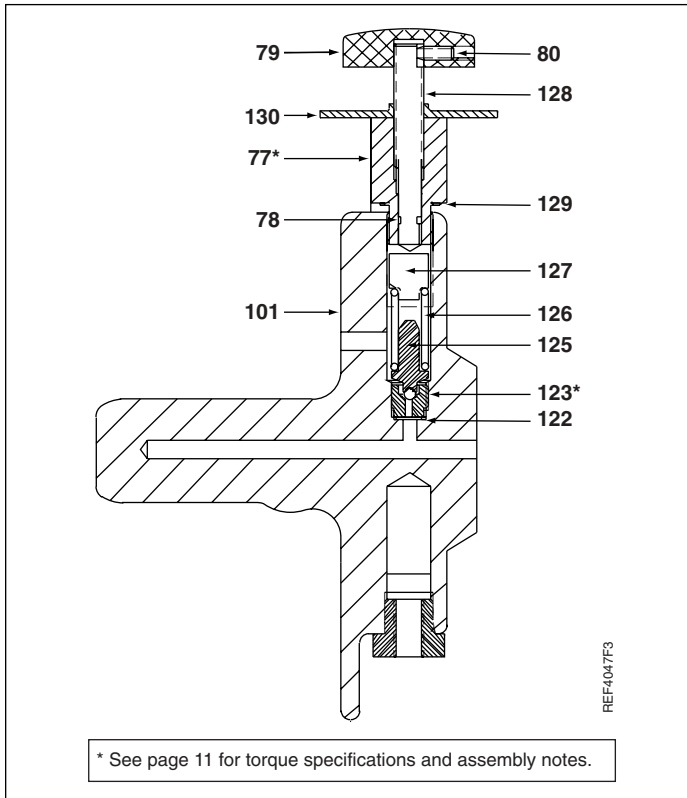


Figure 3, Relief Valve

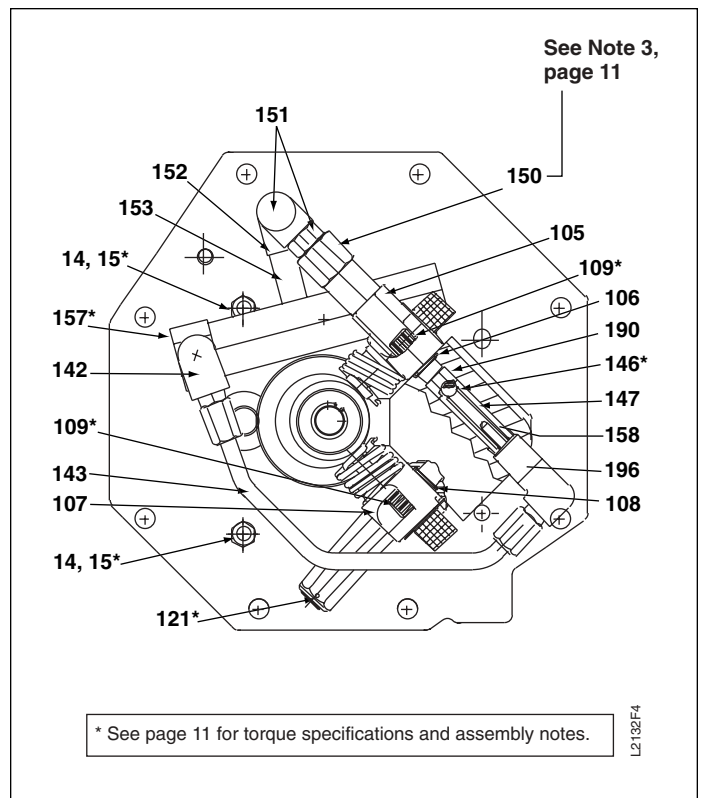
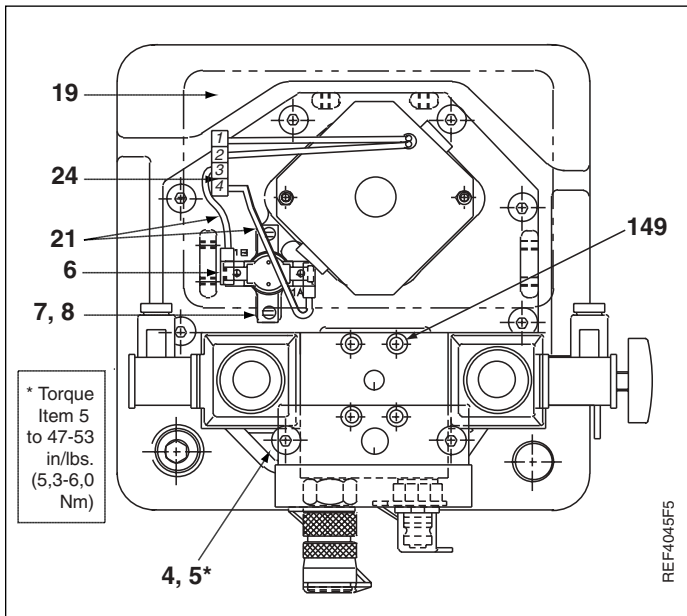


Figure 4, Pump Bottom View

Repair Parts List for Figures 1-4

Item	Part Number	Qty.	Description
2	★ DA12088167SR	1	Gasket (Includes item 156)
3	DA5664900SR	1	Reservoir Assembly
10	DA3776006	2	Pin
14	DA15066	4	Lock Washer
15	B1018121	4	Hex Nut
17	CW261225	6	Eyelet
18	F866028	6	Machine Screw
19	CW259298	1	Baffle
22	DA5476900SR	1	115V Poppet Valve Ass'y
	DA5477900SR	1	220V Poppet Valve Ass'y
25	Contact Enerpac	1	Nameplate
26	DC818003	4	Rivet
27	DA608024	1	Vent Plug
28	★ B1906503	1	O-Ring
42	GT8004L	1	Gauge
77	DA5775190	1	Adjusting Screw Body
78	★ B1003503	1	O-Ring
79	CB815381	1	Knob
80	CB825028	1	Set Screw
101	DA12490840SR	1	Pump Manifold (Includes item 121)
102	CW179259	1	115VAC Motor
	DC1415259	1	220VAC Motor (50 Hz)
105	CW298950SR	1	.53 Piston Block Assembly
106	★ B1007503	1	O-Ring
107	CW299950SR	1	.24 Piston Block Assembly
108	★ B1012803	1	O-Ring
109	B1008028	4	Screw
110	CW252107	1	Bearing
114	CW301228	1	Driven Gear
115	★ B1097057	1	Spring Pin
116	★ CW199107	1	Bearing
117	CW251107	1	Bearing
118	CW302107	1	Bearing
119	CW303104	1	Shaft
121	DA5999900SR	1	Relief Valve (see figure 4)
122	★ C846037	1	Gasket

Item	Part Number	Qty.	Description
123	★ DA5771290	1	Seat
125	DC990900	1	Ball Guide Assembly
126	★ DA3282110	1	Compression Spring
127	DA5772013	1	Spring Guide
128	DA5773048	1	Adjusting Screw
129	★ S1167	1	Gasket
130	DA5774021	1	Lock Nut
140	R515245-2	1	Plug
142	B202291	1	Elbow
143	DA7000268	1	Tube
144	★ CW467044	1	Retaining Ring
145	★ DA445107	2	Bearing
146	★ B1007016	1	Ball
147	★ DA1564110	1	Spring
149	DA5859028	4	Screws
150	DA1015950SR	1	Relief Valve Assembly
151	DA5849092	1	Elbow Fitting
152	Y714291	1	Elbow
153	C642395	1	Nipple
154	CU876028	3	Screw (10-24)
155	DA3585186	3	Spacer
156	See item 2	1	Gasket
157	DA3281900SR	1	Unloading Valve Assembly
158	DA3303900SR	1	Spring Guide Assembly
159	DA5878032	1	Fitting Reducer
160	CJ647096	1	Hex Nipple
161	DA5879026	1	Warning Decal
165	F100097-33	1	Connector, Male
184	DA9543037	1	Gasket
190	DA12352290	1	Seat
196	C332291	1	Fitting
200	DC1947167	1	Gasket
Replacement Brushes for Electric Motor			
	DA9584380SR	1	Brush set for 115V Models
	DA9585380SR	1	Brush set for 220V Models
★ Items included in and available only as part of Repair Kit PME10427K.			



Repair Parts List for Figure 5			
Item	Part Number	Qty.	Description
4	★ DA6954167	8	Gasket
5	DC2038028	8	BHC Screw
6	DA5135380	1	Thermostat
7	C701222	2	Washer
8	F658028	2	Pan Head Screw
19	CW259298	1	Baffle
21	DA3712900SR	2	Wire Assembly
24	DA11540380	1	Pin Housing

**Figure 5,
Pump Top
View**

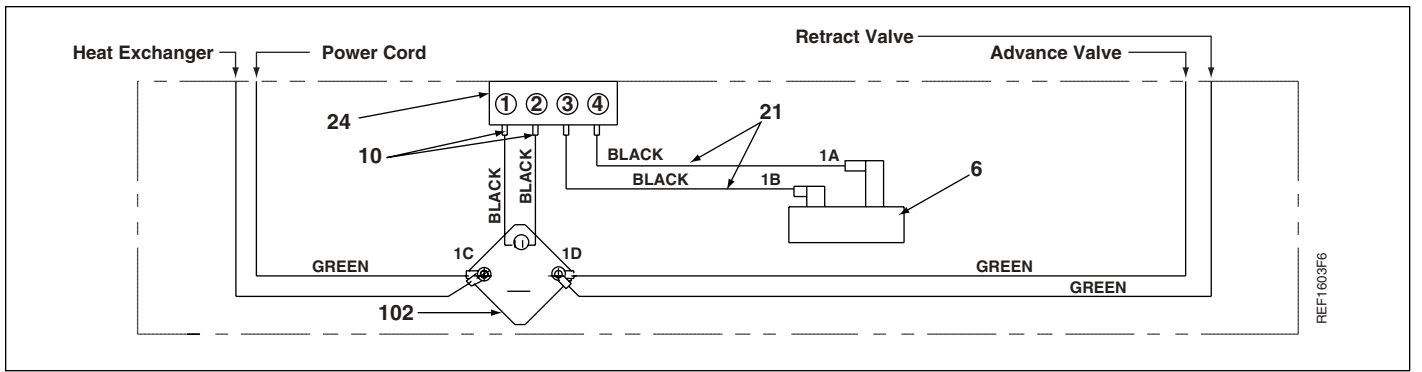


Figure 6, Wiring Diagram

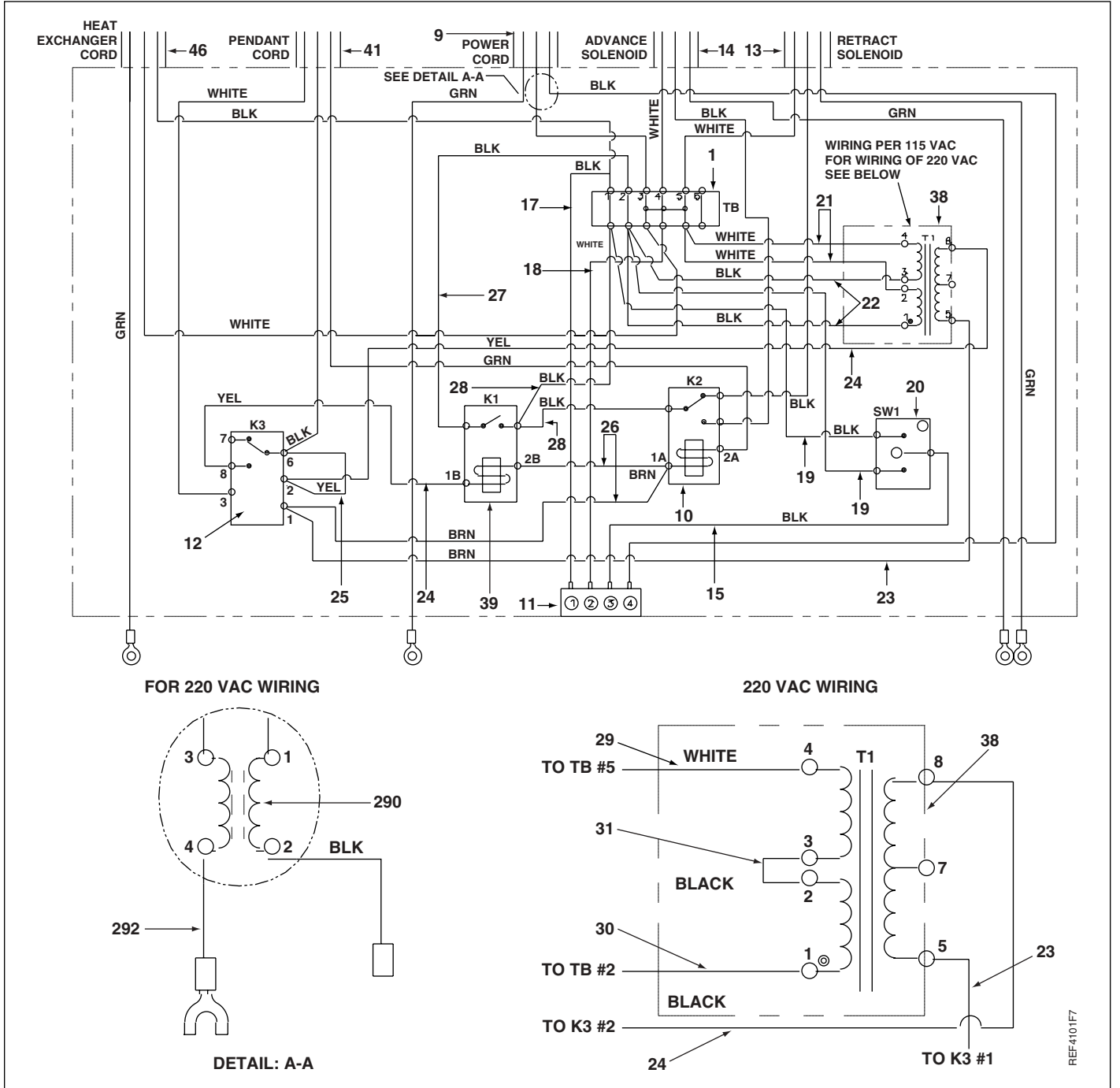


Figure 7, Wiring Diagram

Repair Parts List for Figure 6

Item	Part Number	Qty.	Description	Item	Part Number	Qty.	Description
6	DA5135380	1	Thermostat	102	CW179259	1	115VAC Motor
10	DA3776006	2	Pin	102	DC1415259	1	220VAC Motor (50Hz)
21	DA3712900SR	2	Wire Assembly	292	B1206464	1	Wire (220 V only)
24	DA11540380	1	Pin Housing				

Pump Wiring Chart for 115 VAC and 220 VAC Models

Voltage	Item	Color	Wiring Connection	Voltage	Item	Color	Wiring Connection
both	15	Black	(Item 11, terminal 3) to (Item 20, terminal 3A)	both	26	Brown	(Item 10, terminal 1A) to (Item 39, terminal 2B and Item 12, terminal 1)
both	17	Black	(Item 11, terminal 1) to (Item 1, terminal 1)	both	27	Black	(Item 39, COM terminal) to (Item 1, terminal 2)
both	18	White	(Item 11, terminal 2) to (Item 1, terminal 4)	both	28	Black	(Item 39, NO terminal) to (Item 10, COM terminal and Item 1, terminal 1)
both	19	Black	(Item 20, terminal 3B) to (Item 1, terminal 1)	115 VAC	9	Black White Green	connect to Item 11, terminal 4 connect to Item 1, terminal 3 connect to motor, terminal 1C
both	19	Black	(Item 20, terminal 3C) to (Item 1, terminal 2)	220 VAC	9	Black White Green	(Item 190, terminal 1) (Item 190, terminal 3) connect to motor, terminal 1C
115 VAC	21	White	(Item 1, terminal 5) to (Item 38, terminals 2 and 4)	both	13	Black White Green	connect to Item 10, NC terminal connect to Item 1, terminal 5 connect to motor, terminal 1D
115 VAC	22	Black	(Item 1, terminal 2) to (Item 38, terminals 1 and 3)	both	14	Black White Green	connect to Item 10, NO terminal connect to Item 1, terminal 4 connect to motor, terminal 1D
220 VAC	29	White	(Item 1, terminal 5) to (Item 38, terminal 4)	both	41	Black White Green	connect to Item 12, terminal 6 connect to Item 12, terminal 3 connect to Item 10, terminal 2A
220 VAC	30	Black	(Item 1, terminal 2) to (Item 38, terminal 1)	both	46	White Green	connect to Item 1, terminal 3 connect to item 1, terminal 1 Connect to motor terminal 10
220 VAC	31	Black	(Item 38, terminal 2) to (Item 38, terminal 3)	220 VAC	290	Black White	(Item 11, terminal 4) (Item 190, terminal 4) to (Item 1, terminal 3)
both	23	Brown	(Item 12, terminal 1) to (Item 38, terminal 5)				
both	24	Yellow	(Item 12, terminal 2) to (Item 38, terminal 8)				
both	24	Yellow	(Item 12, terminal 8) to (Item 39, terminal 1B)				
both	25	Yellow	(Item 12, terminal 6) to (Item 12, terminal 2)				

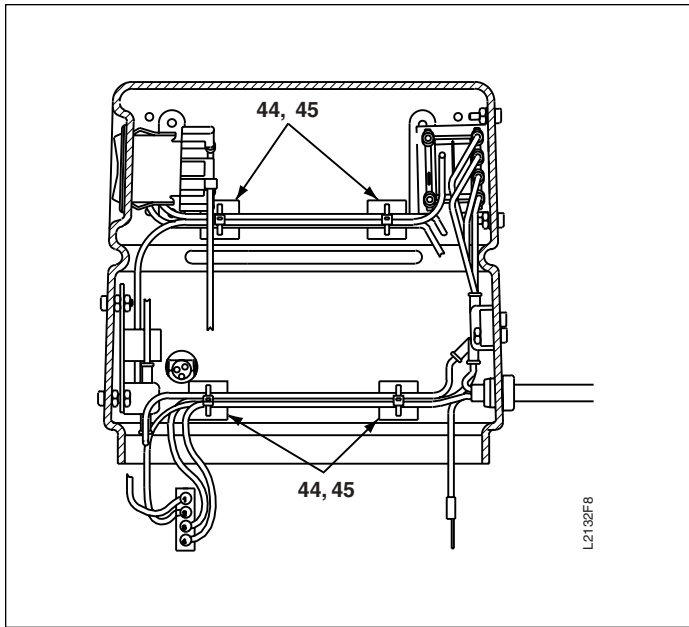


Figure 8, Shroud Wiring - Behind Motor

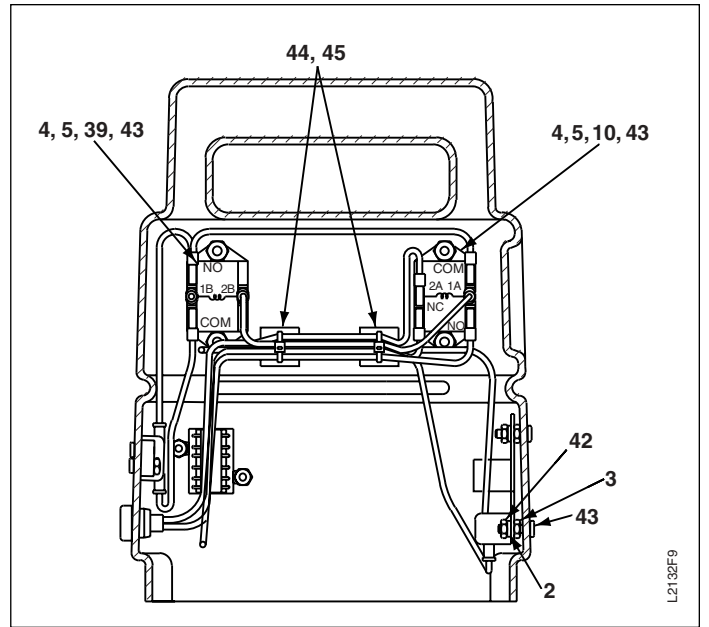


Figure 9, Shroud Wiring - Front of Motor

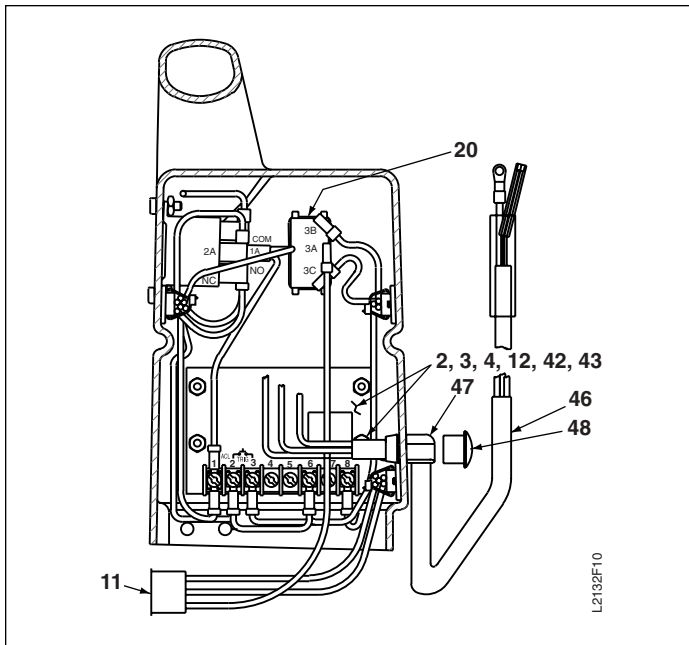


Figure 10, Shroud Wiring - Left of Motor

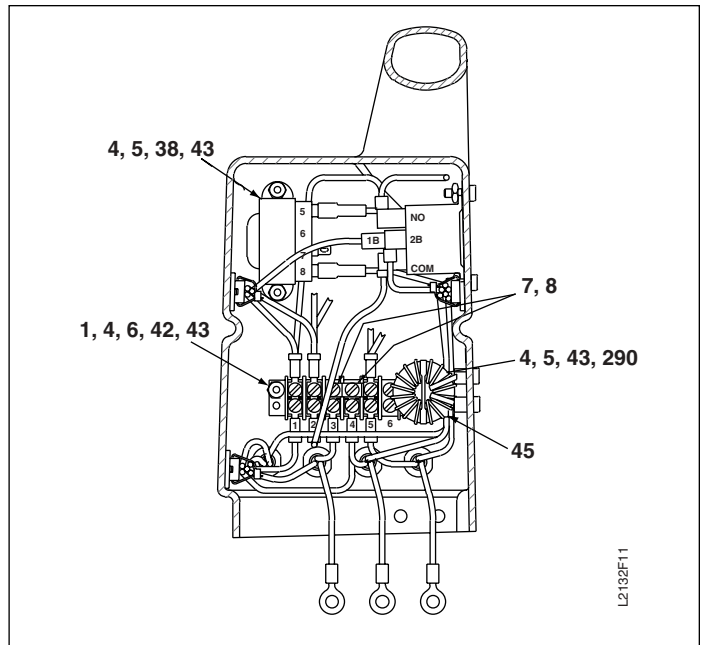


Figure 11, Shroud Wiring - Right of Motor

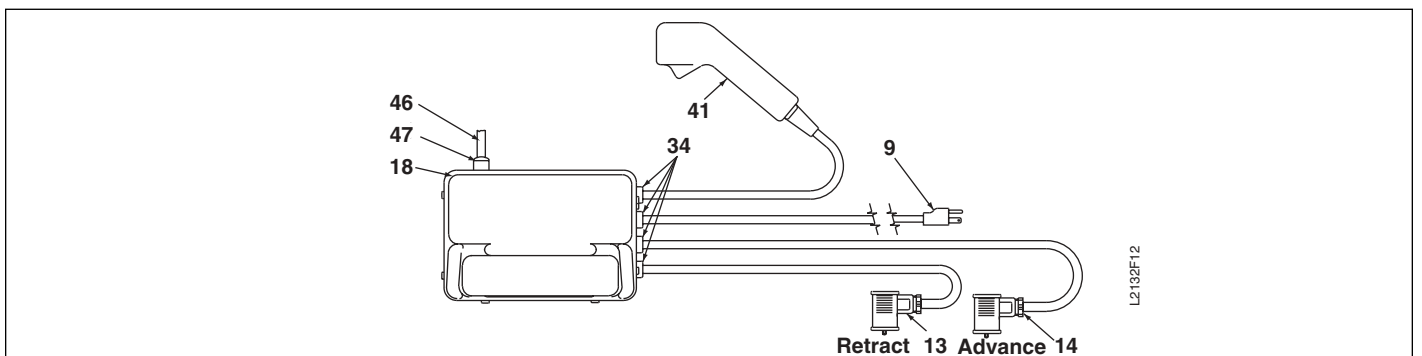


Figure 12, Top View, Cord and Cables

Repair Parts List for Figures 8-12

Item	Part Number	Qty.	Description	Item	Part Number	Qty.	Description
1	DA5884199	1	Terminal Strip	18	DA5921900SR	1	Wire Assembly
2	CH890108	4	Back-Up Washer	20	E1500002	1	Switch
3	DA5909021	4	Nylon Nut #6-32	34	CR759291	4	Cord Bushing
4	BC1310728	12 14	Screw (115V) Screw (220V)	38	DA5875380	1	Transformer
5	F75021	6 8	Lock Nut #6-32 (115V) Lock Nut #6-32 (220V)	39	E1300008	1	Relay
6	DA5801199	1	Terminal Marker Strip	41	U972005902SR	1	Pendant Assembly (Fig. 3)
7	DA5803199	2	Terminal Jumper	42	B1013121	6	Hex Nut
8	DA5802199	1	Terminal Cover	43	DA5974098	12 14	Screw Cover (115V) Screw Cover (220V)
9	DA5913900SR DA3728900SR	1 1	115VAC Power Cord 220VAC Power Cord	44	EHC3901075	6	Tie Down
10	DA5581980	1	Relay	45	DA3131217	7	Wire Tie
11	DA11539380	1	Socket Housing	46	DA9520900	1	Heat Exchanger Cord
12	DA9284980	1	Time Delay Relay	47	DA9521380	1	Bushing
13	DA5915900SR	1	Solenoid Cable Assembly	48	DA3731009	1	Plug
14	DA5917900SR	1	Solenoid Cable Assembly	290	DC374900	1	Choke Assy. (220V only)
				293	F100269-5	6 in	Heat Shrink Tubing

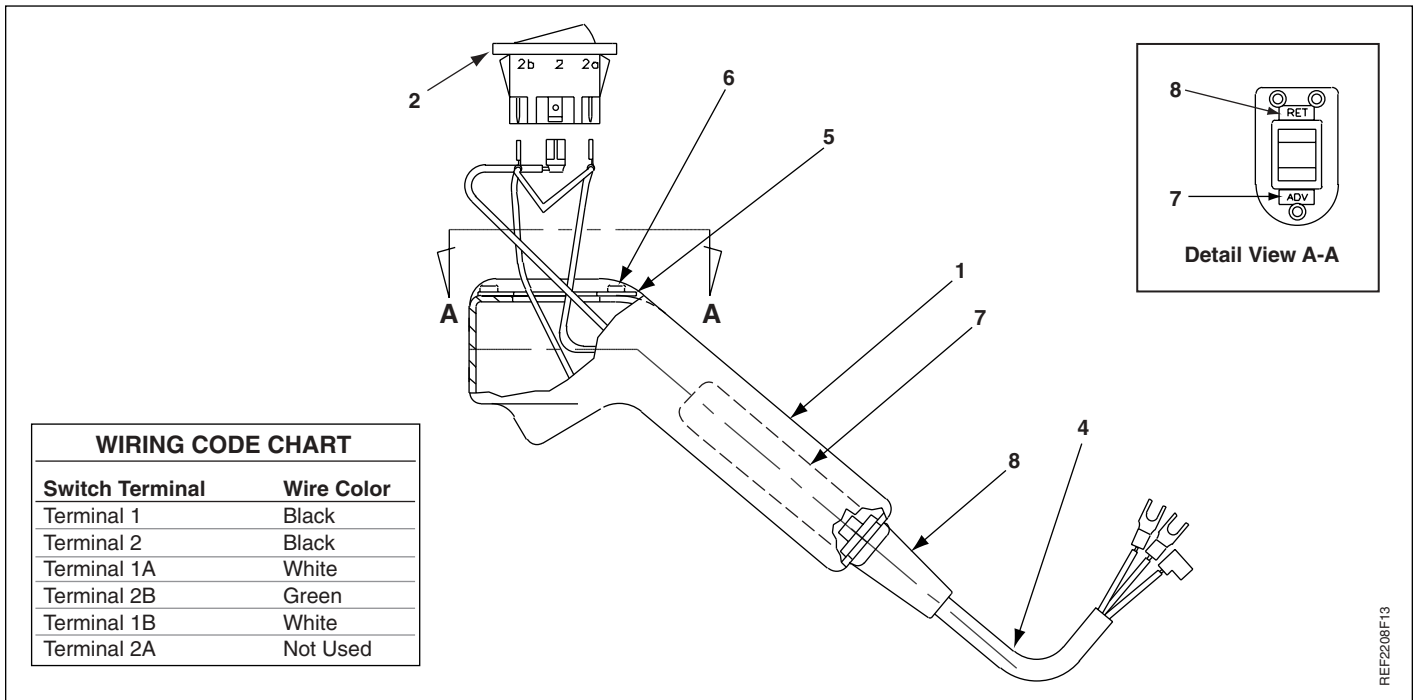


Figure 13, Pendant Assembly

Repair Parts List for Figure 13

Item	Part Number	Qty.	Description	Item	Part Number	Qty.	Description
1	U972005902SR	1	Complete Pendant Assy.	6	DC818003	3	Pop Rivet
2	DC120372	1	Pushbutton Switch	7	U962210268-6	1	Tube
4	U972005904SR	1	Cord Assembly	8	U962072007	1	Strain Relief
5	U972005101	1	Mounting Plate				

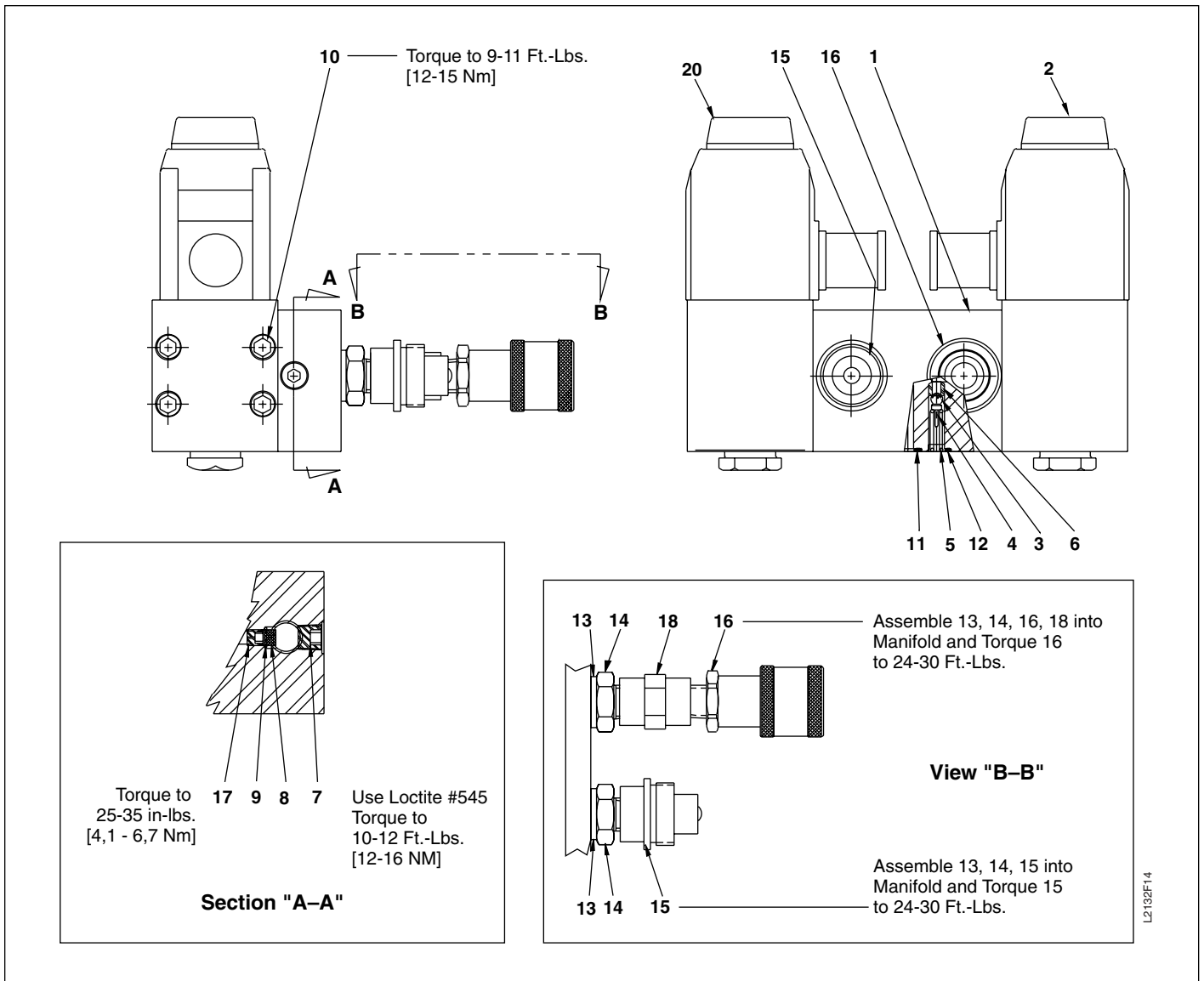
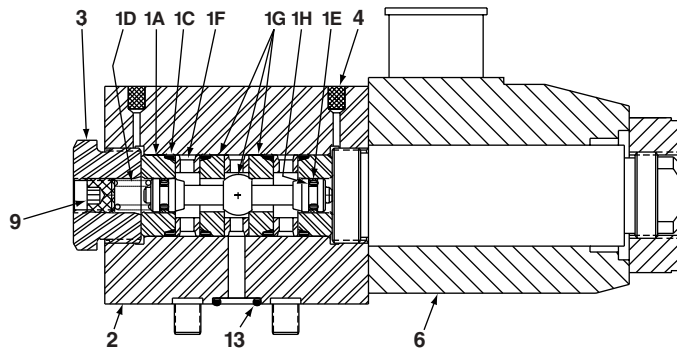


Figure 14, Poppet Valve

Repair Parts List for Figure 14							
Item	Part Number	Qty.	Description	Item	Part Number	Qty.	Description
1	DA5850190	1	Body	11	★ B1011803	1	O-Ring
2	VSG2310P	1	115V Poppet Valve (Fig. 16)	12	★ B1231503	1	O-Ring
	VSG3510R	1	220V Poppet Valve (Fig. 16)	13	U962148167	2	Metal Seal
3	★ B1005016	1	3/16 Ball	14	U962148038	2	Adapter
4	★ F522570	1	Ball Cap	15	U962148134-3	1	Coupler
5	★ U962097110	1	Compression Spring	16	U962148134-2	1	Coupler
6	★ A8015290	1	Seat	17	★ A8006048	1	Orifice Screw
7	★ DA6192245	2	Pipe Plug	18	CK837096	1	Connector
8	★ A8003018	1	Screen	20	DC847900SR	1	115V Poppet Valve (Fig. 15)
9	★ A8015049	1	Retaining Ring		DC848900SR	1	220V Poppet Valve (Fig. 15)
10	B1022028	8	Screw				

★ Indicates items included in and available only as a part of Repair Kit DA5476900K.
 (Repair Kit DA5476900K is included in Pump Repair Kit PME10427K.)



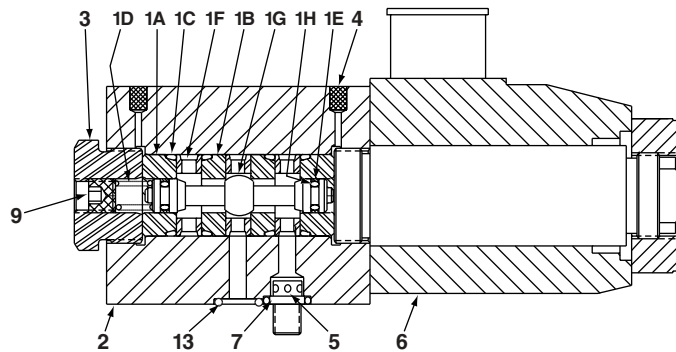
REF1949F15

Figure 15, Poppet Valve Assembly

Repair Parts List for Figure 15

Item	Part Number	Qty.	Description	Item	Part Number	Qty.	Description
1	DA5792949SR	1	Valve Stack	2	DA4393190	1	Valve body
1A	★	2	Bushing	3	DA5421009	1	Valve Plug
1C	★	4	O-Ring	4	DA4390118	2	Filter
1D	★	1	Comp spring	6	DA4405900	1	Solenoid Assembly (115V)
1E	★	2	Glyd. Spring		DA5714900	1	Solenoid Assembly (220V)
1F	★	3	Seat Spacer	9	PA1417027	1	Set Screw
1G	★	1	Poppet Set	13	★B1011803	3	O-Ring
1H	★	2	O-Ring				

★ Items included in and available only as part of Repair Kit DA5476900K. (Repair Kit DA5476900K includes (2) DA579949SR Repair Kits. Repair Kit DA5476900K is included in Pump Repair Kit PME10427K.)



REF4145F16

Figure 16, Poppet Valve Assembly

Repair Parts List for Figure 16

Item	Part Number	Qty.	Description	Item	Part Number	Qty.	Description
1	DA5792949SR	1	Valve Stack	2	DC846190	1	Valve body
1A	★	2	Bushing	3	DA5421009	1	Valve Plug
1B	★	2	Seat	4	DA4390118	2	Filter
1C	★	4	O-Ring	5	DC844661	1	Check Valve
1D	★	1	Comp spring	6	DA4405900	1	Solenoid Assembly (115V)
1E	★	2	Glyd. Spring		DA5714900	1	Solenoid Assembly (220V)
1F	★	3	Seat Spacer	7	B1006503	1	O-Ring
1G	★	1	Poppet Set	9	PA1417027	1	Set Screw
1H	★	2	O-Ring	13	★B1011803	3	O-Ring

★ Indicates items included in and available only as a part of Repair Kit DA5476900K. (Repair Kit DA5476900K includes (2) DA579949SR Repair Kits. Repair Kit DA5476900K is included in Pump Repair Kit PME10427K.)

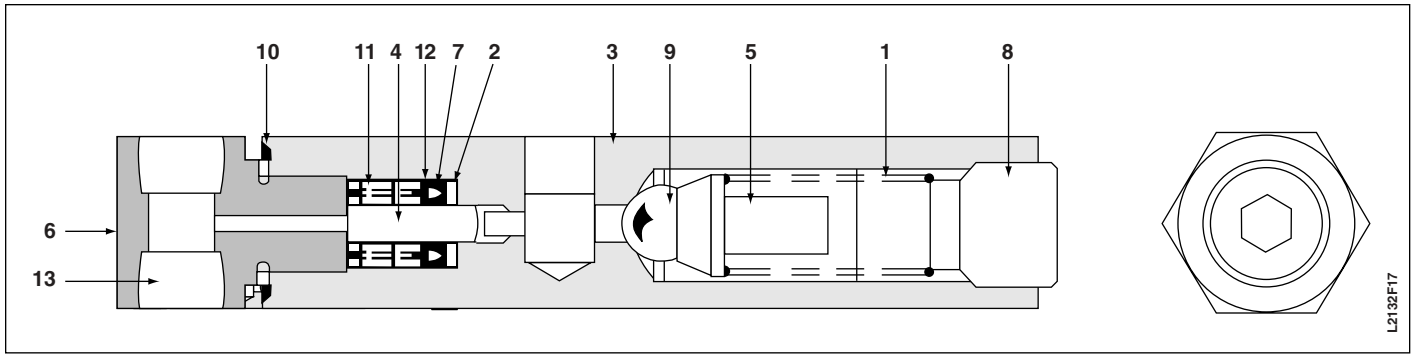


Figure 17, Unloading Valve

Repair Parts List for Figure 17

Item	Part Number	Qty.	Description	Item	Part Number	Qty.	Description
1	★ DA3282110	1	Compression Spring	8	C641087	1	Screw
2	★ SJ100016	1	Back-Up Washer	9	★ B1009016	1	Ball
3	DA9628900SR	1	Valve Assembly (Complete)	10	★ S15167	1	Gasket
4	C622339	1	Plunger	11	★ S4375	1	Spring
5	DA3284160	1	Ball Retainer	12	★ B1024562	1	Leather Back-Up Ring
6	DA3285038	1	Adaptor	13	DA6192245	1	Pipe Plugnet
7	★ C639053	1	U-Cup				

★ Indicates items included in and available only as part of Repair Kit U962208900K-1.
 (Repair Kit U962208900K-1 is included in Pump Repair Kit MX1EK.)

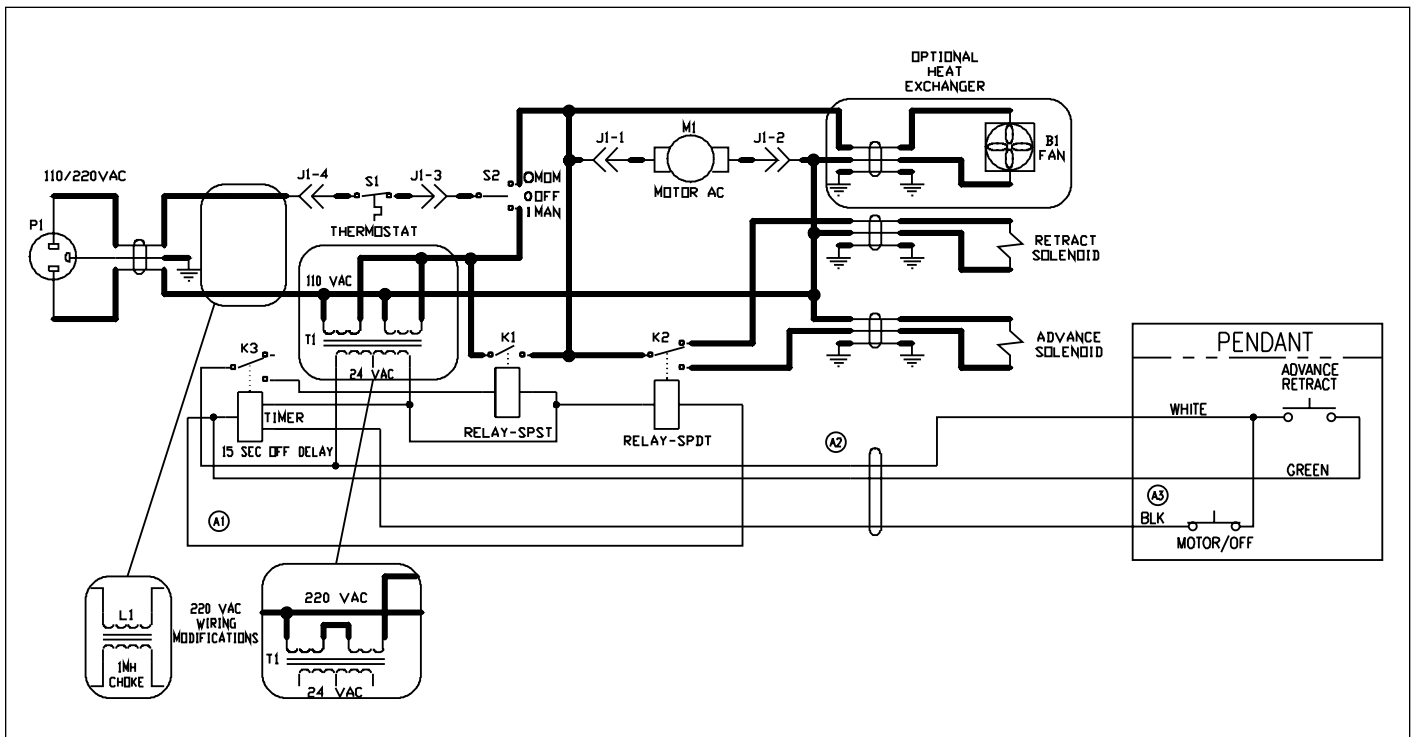


Figure 18, Electrical Schematic

Torque Specifications and Assembly Notes		
Figure	Item No.	Torque Specification and Assembly Note
1	18	Torque to 12 to 18 in-lbs (1,4 to 2,0 Nm). Lubricate with 1 drop Loctite #242
1	42	Torque to 120 to 145 ft-lbs (163 to 196 Nm).
1	159	Torque to 44 to 53 ft-lbs (60 to 71 Nm).
1	160	Torque to 28-34 ft-lbs (38 to 46 Nm).
1	Note 1	Install bearing, Item 117, flush to 0.010" (2.54 mm) recessed from surface.
2	15	Torque to 27 to 31 in-lbs (3,1 to 3,5 Nm).
4	109	Torque to 15 to 16 ft-lbs (20,3 to 27,6 Nm).
4	121	Relief valve setting should be from 11,850 to 12,350 psi (817 to 851 bar).
4	146	Seat must be coined.
4	150	Valve setting should be from 10 to 30 psi (0,7 to 2,0 bar).
	Note 3	Stake threads after setting pressure.
4	157	Relief valve setting should be from 625 to 825 psi (43,2 to 56,8 bar).
5	5	Torque to 47-57 in-lbs (5,3 to 6,4 Nm). Lubricate with sealant.
5	149	Torque to 8 to 10 ft-lbs (10,8 to 13,5 Nm).
4	15	Torque to 27-31 in-lbs (3,1 to 3,5 Nm).
3	77	Torque to 15 to 20 ft-lbs (20,4 to 27,1 Nm).
3	123	Torque to 15 to 16 ft-lbs (20,4 to 21,7 Nm) lubricated.

Enerpac Worldwide Locations◆ e-mail: info@enerpac.com◆ internet: www.enerpac.com**Australia**

ENERPAC, Applied Power Australia Ltd.
Block V Unit 3
Regents Park Estate
391 Park Road
Regents Park NSW 2143
(P.O. Box 261) Australia
Tel: +61 297 438 988
Fax: +61 297 438 648

Canada

Applied Power Canada Ltd.
6615 Ordan Drive, Unit 14-15
Mississauga, Ontario L5T 1X2
Tel: +1 905 564 5749
Fax: +1 905 564 0305

Toll Free:

Tel: +1 800 268 4987
Fax: +1 800 461 2456

China

Applied Power China Ltd.
1F, 269 Fute N. Road
Waigaoqiao Free Trade Zone
Pudong New District
Shanghai, 200 131
China
Tel: +86 21 5866 9099
Fax: +86 21 5866 7156

**France, Turkey, Greece,
Africa, Middle East**

ENERPAC S.A.
B.P. 200
Parc d'Activités
du Moulin de Massy
F-91882 Massy CEDEX (Paris)
France
Tel: +33 1 601 368 68
Fax: +33 1 692 037 50

**Germany, Switzerland,
Austria, Eastern Europe**

ENERPAC
Applied Power GmbH
P.O. Box 300113
D-40401 Düsseldorf
Germany
Tel: +49 211 471 490
Fax: +49 211 471 49 28

Hong Kong

ENERPAC
Room 907 Workingberg
Commercial Building
41-47 Marble Road
North Point
Tel: +852-2561 6295
Fax: +852-2561 6772

India

ENERPAC
Hydraulics (India) Pvt Ltd
Plot No. A-571
MIDC, TTC Industrial Area
Mahape-400 701
Navi Mumbai, India
Tel: +91 22 769 47 78
Fax: +91 22 769 84 73

Italy

ENERPAC
Applied Power Italiana S.p.A.
Via Canova 4
20094 Corsico (Milano)
Tel: +39 2 486 111 00
Fax: +39 2 486 012 88

Japan

Applied Power Japan Ltd.
1-1-11, Shimomae
Toda-shi
Saitama Pref.
Japan 335-0016
Tel: +81-48-430-2311
Fax: +81-48-430-1117

Mexico

ENERPAC Applied Power
Mexico S.A. de C.V.
Avenida Principal
La Paz #100
Fracc. Industrial La Paz
42084 Pachuca, Hidalgo
Tel: +52 771 337 00
Fax: +52 771 838 00

**The Netherlands, Belgium,
Luxembourg, Sweden, Denmark,
Norway, Finland**

ENERPAC B.V.
Storkstraat 25
P.O. Box 269, 3900 AG Veenendaal
The Netherlands
Tel: +31 318 535 911
Fax: +31 318 525 613
+31 318 535 848

Singapore

Applied Power Asia Pte Ltd
No. 8, Ang Mo Kio,
Industrial Park 2
#01-00
Singapore 569500
Thomson Road
P.O. Box 114
Singapore 915704
Tel: +65 484 5108
Fax: +65 484 5669

South Korea

ENERPAC
Applied Power Korea Ltd.
163-12 Dodang-Dong
Choong-Ku, Buchun-shi
Kyunggi-Do
Republic of Korea
Tel: +82 32 675 08 36
Fax: +82 32 675 30 02/73

Spain, Portugal

ENERPAC
Applied Power International S.A.
Avda. Camino de lo Cortao
21 - Nave 3
San Sebastian de los Reyes
28709 Madrid
Spain
Tel: +34 91 661 11 25
Fax: +34 91 661 47 89

United Kingdom, Ireland

ENERPAC Limited
Unit 3, Colemeadow Road
North Moons Moat
Redditch
Worcester B98 9BP
United Kingdom
Tel: +44 01527 598 900
Fax: +44 01527 585 500

**USA, Latin America
and Caribbean**

ENERPAC
P.O. Box 3241
6101 N. Baker Road
Milwaukee, WI 53209 USA
Tel: +1 262 781 6600
Fax: +1 262 781 1049

User inquiries:

+1 800 433 2766

Distributor inquiries/orders:

+1 800 558 0530

All Enerpac products are guaranteed against defects in workmanship and materials for as long as you own them.

For your nearest authorized Enerpac Service Center, visit us at www.enerpac.com

12/15/00